

# DANISH LIVING – DESIGN IN TRANSITION



**BRUUN RASMUSSEN**

PART OF THE BONHAMS NETWORK

# DANISH LIVING – DESIGN IN TRANSITION

Traditionel Auktion 914



## AUKTION

Mandag 12. juni kl. 19

## EFTERSYN

Onsdag 7. juni kl. 11 - 17

Torsdag 8. juni kl. 11 - 20

Fredag 9. juni kl. 10 - 17

Lørdag 10. juni kl. 11 - 16

Søndag 11. juni kl. 11 - 16

eller efter aftale



**BRUUN RASMUSSEN**

KUNSTAUKTIONER

Bredgade 33 · 1260 København K · Tlf. +45 8818 1111  
info@bruun-rasmussen.dk · bruun-rasmussen.dk



## AUKTIONSKALENDER

---

Mandag	12. juni - Design		
	kl. 15	Kunsthåndværk	1 - 38
		Møbler, lamper og tæpper	39 - 214
	kl. 19	Danish Living - Design in Transition	215 - 319
Tirsdag	13. juni - Modern Art		
	kl. 17	Malerier og skulpturer	320 - 504
		Grafik	505 - 531
Onsdag	14. juni - Fine Art and Antiques		
	kl. 13	Asiatisk kunsthåndværk	601 - 669
	kl. 15	Manuskripter og arkivalier fra Valdemars Slot	670 - 688
		Møbler, ure, sølv, bronzer, porcelæn og tæpper	689 - 851
	kl. 18	Malerier og tegninger	852 - 976
		Ikoner	977 - 990
Torsdag	15. juni - Eid Mar		
	kl. 14:30	Auktion 918 - Eid Mar-denar	1
Torsdag	15. juni - The Art of Luxury		
	kl. 15	Smykker og tasker	991 - 1234
	kl. 18	Armbåndsure	1235 - 1284
	kl. 20	Champagne - Netauktion på <a href="http://bruun-rasmussen.dk">bruun-rasmussen.dk</a>	

---

### VIGTIG INFORMATION VEDR. BUDGIVNING!

Bonhams' internationale kunder kan også byde med på Bruun Rasmussens aktuelle Traditionelle Auktion via Bonhams' hjemmeside: [bonhams.com](http://bonhams.com)

### SIDSTE FRIST FOR AFHENTNING: ONSDAG DEN 28. JUNI

Genstande købt på denne auktion skal være betalt senest otte dage efter fakturadatoen og afhentet i Bredgade 33 senest onsdag den 28. juni. I modsat fald bliver de transporteret til Bruun Rasmussens lager på Paul Bergsøes Vej 16 i Glostrup for købers regning og risiko, hvor de kan afhentes fra fredag den 30. juni. Transporten koster 150 kr. pr. genstand inkl. moms, og opbevaringen koster 150 kr. pr. genstand pr. påbegyndt uge inkl. moms.



## DANISH LIVING – DESIGN IN TRANSITION

Live Auction 914



### AUCTION

Monday 12 June 7 pm

### PREVIEW

Wednesday 7 June 11 am - 5 pm

Thursday 8 June 11 am - 8 pm

Friday 9 June 10 am - 5 pm

Saturday 10 June 11 am - 4 pm

Sunday 11 June 11 am - 4 pm

or by appointment



**BRUUN RASMUSSEN**  
AUCTIONEERS

Bredgade 33 · DK-1260 Copenhagen K · Tlf. +45 8818 1111  
info@bruun-rasmussen.dk · bruun-rasmussen.dk





## DAYS OF SALE

---

Monday	12 June - Design		
	3 pm	Decorative art	1 - 38
		Furniture, lamps and carpets	39 - 214
	7 pm	Danish Living - Design in Transition	215 - 319
Tuesday	13 June - Modern Art		
	5 pm	Paintings and sculptures	320 - 504
		Prints	505 - 531
Wednesday	14 June - Fine Art and Antiques		
	1 pm	Asian art	601 - 669
	3 pm	Manuscripts and documents from Valdemar's Castle	670 - 688
		Furniture, clocks, silver, bronzes, porcelain and carpets	689 - 851
	6 pm	Paintings and drawings	852 - 976
		Icons	977 - 990
Thursday	15 June - Eid Mar		
	2:30 pm	Auction 918 - Eid Mar Denarius	1
Thursday	15 June - The Art of Luxury		
	3 pm	Jewellery and handbags	991 - 1234
	6 pm	Wristwatches	1235 - 1284
	8 pm	Champagne - Online Auction at <a href="http://bruun-rasmussen.dk">bruun-rasmussen.dk</a>	

### IMPORTANT INFORMATION ABOUT BIDDING AT THE AUCTION

Bonhams' international customers can also bid at Bruun Rasmussen's current Live Auction via Bonhams' website: [bonhams.com](http://bonhams.com)

### DEADLINE FOR CLAIMING ITEMS: WEDNESDAY 28 JUNE

*Items bought at this auction must be paid no later than eight days from the date of the invoice and claimed at Bredgade 33 by Wednesday 28 June at the latest. Otherwise, they will be moved to Bruun Rasmussen's storage facility at Paul Bergsøes Vej 16 in Glostrup at the buyer's expense and risk. Here, they can be picked up from Friday 30 June. This transportation will cost DKK 150 per item VAT included, and storage will cost DKK 150 per item per week VAT included.*

## Danish Living – Design in Transition

Sammen med Bonhams' globale netværk af auktionshuse byder vi velkommen til en særlig auktion med titlen "Danish Living – Design in Transition". Her præsenterer vi et enestående udvalg af dansk design og kunsthåndværk af både frontløbere og mindre kendte navne som fx Børge Mogensen, Hans J. Wegner, Nanna Ditzel, Poul Kjærholm, Gertrud Vasegaard, Vibeke Klint, Anna Thommesen og Gunnar Aagaard Andersen. Auktionen tager afsæt i en stærk designtradition og en særlig måde at indrette sig på, der nåede sit klimaks i slutningen af 1960'erne og står som indbegrebet af "Danish Living" og et moderne udtryk for den danske hygge.

Fortællingen om dansk design tager ellers ofte afsæt i de frugtbare parløb mellem dygtige møbelsnedkere og kreative møbeldesignere, der med udgangspunkt i teorier formuleret i 1920'erne og 30'erne vandt indpas efter 1945, hvor Europa var ved at komme sig over rædslerne fra anden verdenskrig. Erfaringerne fra krigen førte til et ønske om at reformere samfundet og skabe en bedre verden for menneskeheden. Viljen til forandring bundede både i et politisk, ideologisk og økonomisk behov, og der blev indført nye programmer for boliger, uddannelser og velfærd i Danmark. Det førte til en kreativ eksplosion hos de danske møbeldesignere, der ville skabe nye løsninger tilpasset det moderne liv. Formgiverne skabte her nogle af historiens største møbelikoner og satte dansk design på verdenskortet.

Når samfundets strukturer og tankemønstre transformerer sig, følger indretningen af vores hjem naturligvis med, og efterhånden som efterkrigsårene gik, ændrede behovet sig igen i forhold til indretning, boliger og livsformer. 1960'erne betød økonomisk fremgang, og kvinderne indtog arbejdsmarkedet. Det medførte nye familiestrukturer, og forbrugerne blev mere kritiske. Der opstod nye trends og en selektiv tilgang til, hvad man som menneske havde brug for. De små lejligheder fra efterkrigsårene var trange, og mange flyttede i mere rummelige enfamilieshuse i forstæderne tæt på naturen. I slutningen af 1960'erne udviklede der sig en specifik tone i dansk indretning mod et mere enkelt og gedigent udtryk. Fokus blev langtidsholdbare møbler af stor håndværksmæssig kvalitet, naturens farver og materialer udgjorde skalaen i hjemmet, de skandinaviske træsorter som eg, bøg og ask blev foretrukket og keramiske værker og tekstiler med enkle geometriske mønstre kom til at indgå som en vigtig del af interiøret. Meget af det foretrukne design og kunsthåndværk i slutningen af 1960'erne blev formgivet tilbage i efterkrigsårene, men genstandene blev nu håndplukket ud fra den nye trendskabende æstetik.

Tankegangen og æstetikken fra slutningen af 1960'erne synes i høj grad at matche den måde, vi i dag gerne vil indrette os på. Klimakrisen og behovet for bæredygtighed gør trenden fra dengang endnu mere relevant for os i dag. Vores hjem skal igen reflektere eftertænksomhed, kvalitet og modstand mod overforbrug. På auktionsmarkedet oplever vi en fornyet interesse fra designentusiaster over hele verden for møbler og kunsthåndværk, der passer ind i en sådan indretning. Auktionen "Danish Living – Design in Transition" sætter derfor spot på denne trend med rødder tilbage til 1960'erne.

Vi glæder os til at se alle til eftersyn og auktion!

Peter Kjelgaard Jensen, leder af europæisk strategi og integration, Bonhams Design



## Danish Living – Design in Transition

Together with Bonhams' global network of auction houses, we welcome you to a special auction entitled "Danish Living – Design in Transition". Here we present a unique selection of Danish design and decorative art by both lesser-known names and leading figures such as Børge Mogensen, Hans J. Wegner, Nanna Ditzel, Poul Kjærholm, Gertrud Vasegaard, Vibeke Klint, Anna Thommesen and Gunnar Aagaard Andersen. The auction takes its starting point in a strong design tradition and a special way of decorating homes, which reached its climax in the late 1960s and stands as the epitome of "Danish Living" and a modern expression of the Danish term "hygge".

The story of Danish design is often focused on the fruitful pairings between skilled cabinetmakers and creative furniture designers. These collaborations were based on theories formulated in the 1920s and 1930s, but they only gained traction after 1945, when Europe was recovering from the horrors of the Second World War. The experiences from the war led to a desire to reform society and create a better world for humanity. The willingness to change was rooted in a political, ideological and economic need, and new programmes for housing, education and welfare were introduced in Denmark. This led to a creative boom among the Danish furniture designers, who wanted to create new solutions adapted to modern life. The designers created some of history's greatest furniture icons and put Danish design on the world map.

When society's structures and ideas change, the interior decoration of our homes often follows suit, and as the post-war years passed, the need for change once again influenced interior decoration, housing and our way of life. The 1960s meant economic progress, and women entered the labour market. This led to new family structures, and consumers became more critical. New trends emerged and a selective approach to individual needs. The small apartments from the post-war years were cramped, and many moved into more spacious single-family houses in the suburbs closer to nature. At the end of the 1960s, a specific trend developed in Danish interior design towards a more simple and solid expression. The focus became long-lasting furniture made with a high quality of craftsmanship. Colours and materials from nature formed the palette of the home. Scandinavian wood types such as oak, beech and ash were preferred, and ceramic works and textiles with simple geometric patterns came to be included as an important part of the interiors. Much of the favoured design and decorative art of the late 1960s were conceived back in the post-war years, but the objects were now handpicked from the new trendsetting aesthetics.

The way of thinking and the aesthetics from the late 1960s seem to match the way we want to live today. The climate crisis and the need for sustainability make the trend from that time even more relevant for us today. We once again want our homes to reflect thoughtfulness, quality and resistance to overconsumption. On the auction market, we are experiencing a renewed interest from design enthusiasts around the world in furniture and decorative art that fit into such an interior decoration. The auction "Danish Living – Design in Transition" therefore puts a spotlight on this trend with roots going back to the 1960s.

We look forward to seeing everyone at the preview and auction!

Peter Kjelgaard Jensen, Head of European Strategy & Integration, Bonhams Design



# The Art of Luxury

*- Would You Like to Receive the New Catalogue?*

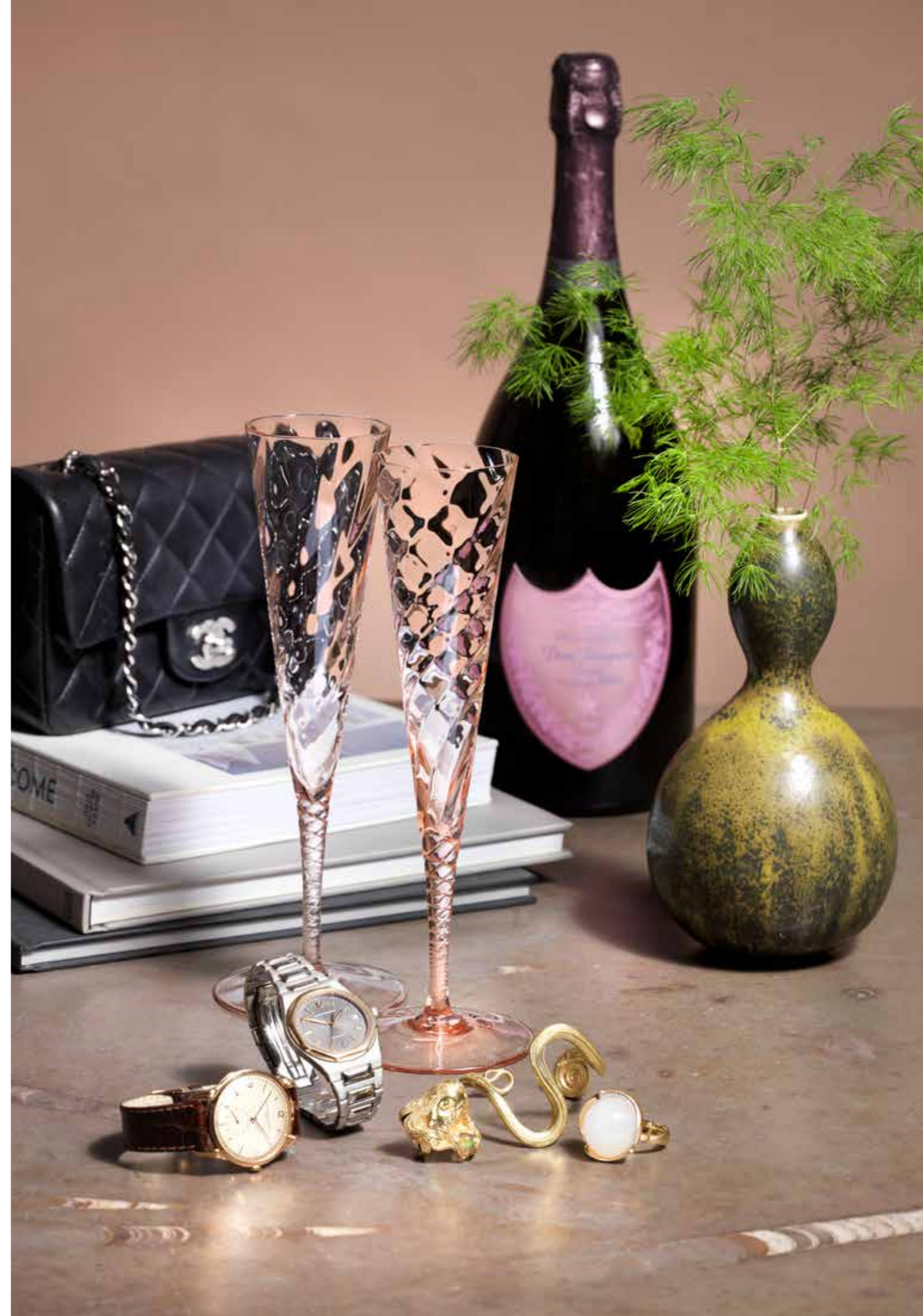
We are proud to present a brand-new catalogue entitled "The Art of Luxury" as part of this Live Auction. In the catalogue you can discover an exclusive world of luxury with jewellery, fashion, wristwatches and wine. We are seeing a great international interest in these categories, and as part of Bonhams' global network of auction houses we are placing an even bigger spotlight on these four luxury categories.

You will have ample opportunity to dive into some of the most sought-after high-quality brands across the categories, where you can find, among other items, diamond jewellery and Hermès bags, as well as rare Champagnes and wristwatches from Rolex.

## Have the Catalogue Sent to Your Home

You will find these categories in the catalogue "The Art of Luxury", and therefore they will not be part of our other catalogues anymore. Jewellery, fashion and wristwatches are sold at Live Auctions and all lots in these categories are presented in the catalogue, while wine will be sold at an Online Auction and the lots at this auction will be presented on our website.

If you wish to receive our new catalogue in print, you can register as a subscriber by logging on to your personal page at [bruun-rasmussen.dk/m/account/catalog\\_subscriptions](https://bruun-rasmussen.dk/m/account/catalog_subscriptions). You can also find the catalogue online at our website.





## SPECIALISTS IN DECORATIVE ART AND DESIGN



*Head of Department of Modern  
Decorative Art and Design*  
Peter Kjølgaard Jensen  
+45 8818 1191  
pkj@bruun-rasmussen.dk



*Design*  
Anna Berger Widenborg  
+45 8818 1187  
awi@bruun-rasmussen.dk



*Design*  
Poul Svalgaard Henriksen  
+45 8818 1132  
psh@bruun-rasmussen.dk



*Design*  
Anders Bodholt Askman  
+45 8818 1198  
aba@bruun-rasmussen.dk



*Design*  
Klara Johansdotter Hagberg  
+45 8818 1236  
kjh@bruun-rasmussen.dk



*Director of Valuations and Sales*  
Kasper Nielsen  
+45 8818 1121  
kn@bruun-rasmussen.dk



*Shipping*  
Tina Bavnbej Jepsen  
+45 8818 1056  
tbj@bruun-rasmussen.dk



*Representative France + Belgium*  
Ditte Herborg Krogh  
+33 6 6185 4564  
dhk@bruun-rasmussen.dk



*Decorative Art*  
Amalie Hansen  
+45 8818 1194  
amh@bruun-rasmussen.dk



*Design*  
Andreas Krabbe  
+45 8818 1193  
ank@bruun-rasmussen.dk



*Paintings and Design*  
Peter Beck - Aarhus  
+45 8818 1186  
pb@bruun-rasmussen.dk



*Design*  
Peter Tholstrup - Aarhus  
+45 8818 1195  
pt@bruun-rasmussen.dk



*Global Head of Modern Decorative Art and Design  
- Bonhams / USA*  
Benjamin Walker  
+1 212 710 1306  
benjamin.walker@bonhams.com



*International Specialist, Europe  
- Bonhams / Netherlands*  
Marcel Brouwer  
+31 (0)6 547 05 086  
marcel.brouwer@bonhams.com

## DESIGN EVENTS AT THE PREVIEW

Bredgade 33, Copenhagen

*At Bruun Rasmussen, we are part of the festival "3daysofdesign", which each year attracts design enthusiasts from all over the world. This year the festival will be celebrated at galleries and design shops all over Copenhagen from 7-9 June. At our preview, we invite you inside to listen to great talks and experience events about design. The industry's leading design specialist Peter Kjølgaard and the legendary British design pioneer Tom Dixon will be at the helm.*

**Wednesday 7 June at 11 am to 12 pm**

**Opening remarks by Peter Kjølgaard and presentation by Tom Dixon**

Peter Kjølgaard will give the opening remarks on "Danish Living - Design in Transition".

Tom Dixon will then present his thoughts on the creative process behind the "BIRD Eelgrass Chaise" chair, which is up for auction.

**Thursday 8 June at 4 to 8 pm**

**Drinks and live music with Tom Dixon and band + DJ**

In the beautiful, historic saleroom, we can offer you a drink while Tom Dixon plays bass alongside Johannes Torpe on drums, Kristian Marstal on keyboard and vocals by Maria Marstal - all accompanied by a DJ.

**Friday 9 June at 10 to 11 am**

**Coffee, croissants and a panel discussion**

A panel discussion with Tom Dixon, Peter Kjølgaard, journalist Lars Hedebo Olsen from Politiken and design specialist Jonatan Jahn from Bukowskis.

Theme: The role of the auction houses in promoting historic design and contemporary design.

**All days at 11 am to 5 pm**

**Live performance with "Robot to Craft Special Edition Tom Dixon CONE Lights"**

A Universal Robot will assist Tom Dixon in creating unique versions of his latest CONE lamps. The lamps are made on site and the unique pieces will subsequently be up for auction.

We look forward to welcoming everyone to a couple of festive design days in the auction house!



**BRUUN RASMUSSEN**  
PART OF THE BONHAMS NETWORK

**3daysofdesign**

**DANISH LIVING – DESIGN IN TRANSITION**

Monday 12 June 7 pm  
Lot 215 – 319





**215**  
**HANS J. WEGNER**

b. Tønder 1914, d. Gentofte 2007

Rare solid pine "Buck Chair" with tapering legs. Seat and back with woven sand coloured girths. Designed 1959. This example made 1960s by cabinetmaker Johannes Hansen.

*DKK 125,000 / € 17,000*



**215**



216

**216**  
**ILLUM WIKKELSØ**

b. 1919, d. 1999

Box shaped, patinated pine lounge chair. Loose cushions in seat and back upholstered with sand coloured canvas. This example manufactured 1970s by N. Ejlersen.

Literature: "Mobilia" no. 167-168, June-July 1969.

DKK 15,000-18,000 / € 2,000-2,400

**217**  
**DANISH CABINETMAKER**

Solid, patinated oak table / bench. Pierced seat/top with lamella. This example made approx. 1970s, Denmark. H. 43 cm. L. 170 cm. W. 50 cm. DKK 20,000 / € 2,700



217



218

**218**  
**JØRGEN WOLFF**

"Conus". A set of four conical Oregon pine pendants. Designed 1959. These examples manufactured 1960s by Wolff's Møbelsnedkeri. H. 59 cm. (4)

Model presented at The Copenhagen Cabinetmakers' Guild Exhibition at Designmuseum Danmark, 1959.

Literature: Grete Jalk [ed.], "40 Years of Danish Furniture Design", vol. 4, ill. p. 107.

DKK 12,000-15,000 / € 1,600-2,000



219



219



220

**219**  
**JØRGEN BO**

b. 1919, d. 1999

Set of ten wall lamps with cylindrical opal glass shades, brass frame. Designed 1968. These examples manufactured 1960-1970s by Fog & Mørup. H. 28 cm. (10)

*DKK 20,000–30,000 / € 2,700–4,050*

**220**  
**BØRGE MOGENSEN**

b. Aalborg 1914, d. Gentofte 1972

Oak sideboard on runner legs. Front with two foldable doors with brass fittings. Oak interior with shelves and pull-out trays. Model BM 57. Designed 1957. This example manufactured 1960-1970s by P. Lauritsen & Son. H. 90.2 cm. W. 138.5 cm. D. 50 cm.

*Literature: Mobilia 1957.*

*DKK 20,000 / € 2,700*



**222**  
**HANS J. WEGNER**

b. Tønder 1914, d. Gentofte 2007

Oak sofa / daybed with round, tapering legs. Back with woven cane. Mattress upholstered with white bouclé fabric, fitted with buttons. This example manufactured 1960s by Getama. L. 207.5 cm. D. 104 cm. H. 75 cm.

*DKK 20,000 / € 2,700*

**221**  
**JOHANNES HANSEN**

b. 1886, d. 1961

"JH 100". Freestanding teak bar cabinet mounted on castors. Top with white laminate. Front with two sliding doors, interior with storage, two drawers and three pull-out trays with white laminate. This example made 1960-1970s by cabinetmaker Johannes Hansen. H. 73 cm. L. 89 cm. W. 47 cm.

*DKK 20,000 / € 2,700*



**223**  
**PREBEN FABRICIUS**

b. 1931, d. 1984,

**JØRGEN KASTHOLM, ATTRIBUTED**

b. Roskilde 1931, d. Düsseldorf 2007

Small ash wood sideboard / bar cube, mounted on castors. Sliding top with white formica inlay. One side with two pull-out trays, one end with "bottle drawer" with adjustable steel rack. Angular steel handles. This example manufactured 1966-1970, presumably by cabinetmaker Poul Bachmann. H. 55.5 cm. L. 100 cm. W. 48.2 cm.

*DKK 15,000 / € 2,000*





224

**224**  
**GRETHE MEYER**

b. 1918, d. 2008

"Ildpot"/"Firepot". Various fire- and ovenproof, unglazed stoneware dishes, bowls and pots. Made and marked by Royal Copenhagen. Designed 1976. Various dimensions. (20)

Comprising:

- 2 bowls no. 22509 H. resp. 9.7 and 10 cm. Diam. 25.5 cm.
- 1 bowl no. 22510. H. 11 cm. Diam. 21.5 cm.
- 3 pots no. 22512. H. 7.3 cm. Diam. 13.7 cm.
- 4 pots no. 22513. H. 5.3 cm. Diam. 13.5 cm.
- 2 heat sticks. L. 19.7 cm.
- 1 large bowl no. 22515. H. 14.3 cm. Diam. 25 cm.

- 1 large bowl no. 22514. H. 12 cm. Diam. 28.3 cm.
- 1 bowl no. 22519. H. 7.7 cm. Diam. 21.8 cm.
- 1 dish no. 22500. H. 5 cm. Diam. 28.7 cm.
- 2 lid no. 22513. Diam 13.5 cm.
- 1 lid no. 22515. Diam. 25.5 cm.
- 1 lid no. 22514. Diam. 28.5 cm.

DKK 4,000–6,000 / € 535–805



225

**225**  
**IBE DAHLQUIST**

b. 1924

A sterling silver jewellery set comprising a necklace and a bracelet with open, slightly curving links. Georg Jensen after 1945. Design no. 149 B. Total weight 177 g. Designed 1965. Bracelet: L. 20 cm. Necklace: L. 41 cm. Original boxes are included. (2)

*Provenance: Private collection, Denmark.*

*Literatures: Janet Drucker: "Georg Jensen - A Tradition of Splendid Silver", bracelet ill. p. 120.*

*Literature: David A. Taylor: "Georg Jensen Jewelry", bracelet ill. p. 287.*

DKK 15,000–20,000 / € 2,000–2,700



226

**226**<sup>ARR</sup>  
**GERTRUD VASEGAARD**

b. Rønne 1913, d. 2007

A circular, slightly tapered stoneware bowl. Decorated with dark brown glazed line decor and with transparent greyish blue glaze. Signed monogram. Unique. H. 10.2–10.5 cm. Diam. 12.5–13.2 cm.

DKK 15,000–20,000 / € 2,000–2,700

**227**<sup>ARR</sup>  
**GERTRUD VASEGAARD**

b. Rønne 1913, d. 2007

An oval stoneware dish decorated with greyish blue geometric decor and with light greyish blue glaze. Signed monogram for Gertrud Vasegaard and studio monogram. Unique. H. 4.4–4.7 cm. W. 23.6 cm. L. 27.2 cm.

DKK 20,000–25,000 / € 2,700–3,350



227



228<sup>ARR</sup>

**PER WEISS**

b. Melby 1953, d. 2023

A large, round stoneware floor vase with incised relief decor. Decorated with reddish brown and transparent glaze. The inside decorated with black glaze. Marked monogram. Unique. H. 73 cm. Diam. 70 cm.

DKK 75,000–100,000 / € 10,000–13,500



228

229<sup>ARR</sup>

**PER WEISS**

b. Melby 1953, d. 2023

A stoneware floor vase with incised relief decor. Decorated with brown, blue and transparent glaze. The inside decorated with bluish black glaze. Marked monogram. Unique. H. 65 cm. Diam. 43 cm.

*Provenance: Private collection, Denmark. Acquired by the current owner directly from the artist.*

DKK 50,000–60,000 / € 6,700–8,050



229



230

**230**

**FINN JUHL**

b. Frederiksberg 1912, d. Ordrup 1989

Two pendants with two-tone grey lacquered metal shades, adjustable bottom shade. Designed 1963. These examples manufactured 1960s by Lyfa. Diam. resp. 26 cm. and 34 cm. (2)

*Literature: Esbjørn Hiort: "Arkitekten Finn Juhl", p. 131.*

*DKK 25,000–30,000 / € 3,350–4,050*

**231**

**DANISH FURNITURE DESIGN**

Very long pine sideboard, mounted on four black stained legs. Front with seven sliding doors with resp. black/grey/white paint, round metal handles. Interior with shelves. Originally wall mounted, later base. This example made approx. 1970s, Denmark. H. 80 cm. L. 427 cm. D. 43.5 cm.

*DKK 40,000–50,000 / € 5,350–6,700*



231



232



233

**232**

**POUL KJÆRHOLM**

b. Østervrå 1929, d. Hillerød 1980

"PK 80". Daybed with chromed steel frame. Loose mattress upholstered with patinated black leather, fitted with buttons. Board of grey painted wood. Designed 1957. This example manufactured 1970s by E. Kold Christensen, stamped. L. 192 cm. *DKK 80,000–100,000 / € 10,500–13,500*

**233**

**POUL KJÆRHOLM**

b. Østervrå 1929, d. Hillerød 1980

"PK 61". Coffee table with chromed steel frame. Square slate top. Designed 1956. This example manufactured 1970–1980s by E. Kold Christensen, stamped. H. 32.5 cm. W./L. 80 cm. *DKK 20,000 / € 2,700*



234



234

**POUL KJÆRHOLM**

b. Østervrå 1929, d. Hillerød 1980

"PK 22". A pair of lounge chairs with chromed steel frame. Seat and back upholstered with black leather. Designed 1956. These examples manufactured approx. 1970s by E. Kold Christensen, stamped. (2) *DKK 25,000–30,000 / € 3,350–4,050*

235

**POUL KJÆRHOLM**

b. Østervrå 1929, d. Hillerød 1980

"PK 22". A pair of lounge chairs with chromed steel frame. Seat and back with woven cane. Designed 1956. These examples manufactured approx. 1970s by E. Kold Christensen, stamped. (2) *DKK 30,000 / € 4,050*



235



236

**236**

**NANNA DITZEL**

b. Copenhagen 1923, d. s.p. 2005

**JØRGEN DITZEL**

b. Frederiksberg 1921, d. København 1961

"Hanging Egg Chair". Lounge chair of woven cane. For mounting in ceiling. Loose seat cushion upholstered with light fabric. Designed 1959. This example made approx. 1970s by Bonacina Pierantonio, Italy. H. 120 cm.

*DKK 15,000–20,000 / € 2,000–2,700*



237

**237**

**NANNA DITZEL**

b. Copenhagen 1923, d. s.p. 2005

**JØRGEN DITZEL**

b. Frederiksberg 1921, d. København 1961

"Hanging Egg Chair". Lounge chair of woven cane. For mounting in ceiling. Loose seat cushion upholstered with black fabric. Designed 1959. This example made 1960s by R. Wengler. H. 120 cm.

*DKK 25,000–30,000 / € 3,350–4,050*

238

**VILHELM WOHLERT**

b. 1920, d. 2007

A pair of circular solid elm side tables with brass base. Designed 1966. These examples made 1966 by cabinetmaker Arne Poulsen. H. 61 cm. Diam. 41.5 cm. (2)

*This very pair of tables presented at The Copenhagen Cabinet-makers' Guild Exhibition at Designmuseum Danmark, 1966.*

*Literature: Grete Jalk [ed.]: "40 Years of Danish Furniture Design", vol. 4, pp. 352-353. DKK 20,000 / € 2,700*



238



239

239

**POUL KJÆRHOLM**

b. Østervrå 1929, d. Hillerød 1980

"PK 15". Set of six moulded ash wood armchairs. Seat with woven cane. Matching loose seat cushions upholstered with sand coloured canvas with natural leather edgings. Designed 1979. These examples manufactured approx. 1980s by PP Møbler, with maker's label. (6)

*Literature: "Poul Kjærholm", Arkitektens Forlag, 1999, illustrated p. 136.*

*DKK 30,000-40,000 / € 4,050-5,350*

240

**ARNE JACOBSEN**

b. Copenhagen 1902, d. s.p. 1971

"The Drop" (Dråben). Very rare, all original chair with browned metal legs. Seat and back upholstered with original patinated brown leather. Designed 1958. This example manufactured approx. 1958 by Fritz Hansen.



The Snack Bar at SAS Royal Hotel

*The present chair is all original and appears as it was used in the Snack Bar at the SAS Royal Hotel. Most "Drop" chairs to be offered in sales in recent years have been chairs that were originally used in the hotel rooms and thus upholstered with wool but later "re-done" with brown leather, and the chromed legs have been altered to resemble copper as the ones made for the Snack Bar.*

*"The Drop" chair was designed for the SAS Royal Hotel in Copenhagen, as part of the special decoration that Arne Jacobsen designed for this, his most famous, complete project. "The Drop" chair was upholstered with wool fabric for the hotel rooms, while a version upholstered with leather was made in 40 pieces for use in the hotel's Snack Bar.*

*Literature: Carsten Thau & Kjeld Vindum, "Arne Jacobsen", 1988, ill. and referred pp. 436, 439 and 441. DKK 350,000–400,000 / € 47,000–53,500*



240

**241**

**NANNA DITZEL**

b. Copenhagen 1923, d. s.p. 2005

Lounge set of rattan consisting of five stools and a low table. Table top of raw glass. Designed 1961. These examples made 1960-1970s by R. Wengler. Table: H. 34.5 cm. (6)

*DKK 20,000-25,000 / € 2,700-3,350*

**242**

**NANNA DITZEL, JØRGEN DITZEL**

b. Copenhagen 1923, d. s.p. 2005, b. Frederiksberg 1921, d. København 1961

Lounge chair of woven cane. Mounting in matching metal stand. Loose seat cushion upholstered with leather. Designed 1959. This example made approx. 1970s by Bonacina Pierantonio, Italy. Chair: H. 120 cm. Stand: H. 207 cm. (2)

*DKK 15,000-20,000 / € 2,000-2,700*







243

**243**  
**NANNA DITZEL**

b. Copenhagen 1923, d. s.p. 2005

An 18 carat gold brooch. Georg Jensen after 1945. Design no. 1337 g. Weight 16.6 g. Designed 1963. Diam. 4 cm.

*DKK 8,000 / € 1,050*

**244**  
**HANS HANSEN**

A sterling silver bracelet with arched, gilded top. Made and marked by Hans Hansen. Design no. 251. Weight 79 g. Inner diam. 5.8-6 cm. W. 4 cm.

*Provenance: Private collection, Denmark.*

*DKK 5,000-6,000 / € 670-805*

**245**<sup>ARR</sup>  
**ALEV EBÜZZIYA SIESBYE**

b. Istanbul 1938

A circular stoneware bowl. Decorated with pale blue glaze, the upper rim with unglazed line decor. Signed alev '84, KM. Unique. H. 9.3-9.6 cm. Diam. 17.7 cm.

*DKK 18,000-20,000 / € 2,400-2,700*



245



244

**246**<sup>ARR</sup>  
**ALEV EBÜZZIYA SIESBYE**

b. Istanbul 1938

A circular stoneware bowl. Decorated with turquoise blue glaze. The upper rim decorated with light turquoise green glaze. Signed alev. Unique. H. 11.7-11.9 cm. Diam. 23 cm.

*DKK 80,000-100,000 / € 10,500-13,500*



246

**247**

**BENT GABRIELSEN**

b. Søborg

A sterling silver bracelet with organic shaped links. Georg Jensen after 1945. Design no. 115. Designed 1953. Weight 61 g. L. 19 cm.

*Provenance: Private collection, Denmark.*

*Literature: David A. Taylor: "Georg Jensen Jewelry", necklace of same design ill. p. 91. DKK 6,000 / € 805*

**248**<sup>ARR</sup>

**ALEV EBÜZZIYA SIESBYE**

b. Istanbul 1938

A circular stoneware bowl. Decorated with greyish brown glaze with greyish violet elements. The upper part with unglazed line decor. Signed alev 83. Unique. H. 13.3-13.5 cm. Diam. 19 cm. DKK 20,000 / € 2,700



248



247

**249**<sup>ARR</sup>

**ALEV EBÜZZIYA SIESBYE**

b. Istanbul 1938

A circular stoneware bowl. Decorated with violet glaze with greyish black elements. Unglazed zig-zag and line decor. Signed alev '79. Unique. H. 18-18.7 cm. Diam. 27 cm.

*DKK 60,000-80,000 / € 8,050-10,500*



249

## Tom Dixon

Established in 2002, Tom Dixon is a British luxury design brand which is represented in 90 countries. Specialising in furniture, lighting and accessories, Tom Dixon has hubs in London, Milan, Hong Kong, New York, Tokyo, Hangzhou, Beijing and Shanghai. With an aesthetic that is intrinsically inspired by the brand's British roots, the products are internationally recognised and appreciated for their pioneering use of materials and techniques.

Founder and eponymous Creative Director Tom Dixon is a restless innovator who rose to prominence in the mid-1980s as a maverick, untrained designer with a line in welded salvage furniture. While working with the Italian giant Cappellini he designed the widely acclaimed 'S' Chair. In the late 90s, Tom became Creative Director at Habitat and rejuvenated the brand while maintaining Terence Conran's vision of enriching everyday life through simple, modern design. In 2001, Tom was awarded an OBE by Her Majesty the Queen for his services to British design. In 2014, he was awarded 'Designer of The Year' at Maison & Objet, Paris. In 2019, he received a silver medal for Best Garden at the RHS Chelsea Flower Show, and in the same year, he was awarded the prestigious London Design Medal at the British Land Celebration of Design Awards. Tom is one of the industry's most feted British designers and is internationally heralded as a significantly original talent.

Launched in 2007, Design Research Studio, the design and innovations agency at the heart of Tom Dixon, continues to create extraordinary spaces globally. Recent projects have included reimagining the modern cruise experience for Virgin Voyages on their first ship, re-inventing the layout and interior of The Pullman Hotel in Bercy, the iconic Drugstore Brasserie on Les Champs-Élysées, Paris, and designing The Manzoni in Milan, Tom Dixon's first European hub which acts as a restaurant, shop and office all in one. In 2018, the brand relocated its headquarters - Cool Office - to London's King's Cross, which was a significant step for the business. Cool Office operates as an office, shop, workshop and restaurant all under one roof and is located in the affluent shopping destination, Cool Drops Yard.

Best-selling products such as Beat, Melt, S-Chair and Wingback are instantly recognisable and have been acquired by the world's most famous museums including the Victoria & Albert Museum, London; MOMA, New York; and the Centre Pompidou, Paris. Latest additions to the brand's range, such as the Fat chair, Spring lights and Swirl accessories are quickly gaining momentum and reiterate Tom Dixon's status and significance in the design world.



**250 \***  
**TOM DIXON**

b. 1959

"Cone Fat". On site manufactured LED table lamp. Cone shaped base in A:GAIN Carlsberg plastic. Mounted with "Mirror Ball" silver shade in 100% re-used polycarbonate. Manufactured June 2023 at Bruun Rasmussen for Tom Dixon. H. 46.5 cm. Diam. 25 cm.

*DKK 8,000–10,000 / € 1,050–1,350*

**251 \***  
**TOM DIXON**

b. 1959

"Cone Fat". On site manufactured LED table lamp. Cone shaped base in Dinesen Douglas fir. Mounted with "Melt" silver shade in 40% re-used polycarbonate. Manufactured June 2023 at Bruun Rasmussen for Tom Dixon. H. 85 cm. Diam. 50 cm.

*DKK 10,000 / € 1,350*

**252 \***  
**TOM DIXON**

b. 1959

"Cone Fat". On site manufactured LED floor lamp. Cone shaped base in Dinesen Douglas fir. Mounted with "Melt" gold shade in 40% re-used polycarbonate. Manufactured June 2023 at Bruun Rasmussen for Tom Dixon. H. 174.5 cm. Diam. 50 cm.

*DKK 15,000 / € 2,000*



**253 \***

**TOM DIXON**

b. 1959

"Cone Fat". Bespoke LED table lamp. Cone shaped base in chrome.  
Mounted with "Globe" silver shade in 100% re-used polycarbonate.  
Manufactured by Tom Dixon. H. 91 cm. Diam. 50 cm.

*DKK 15,000 / € 2,000*



**254 \***

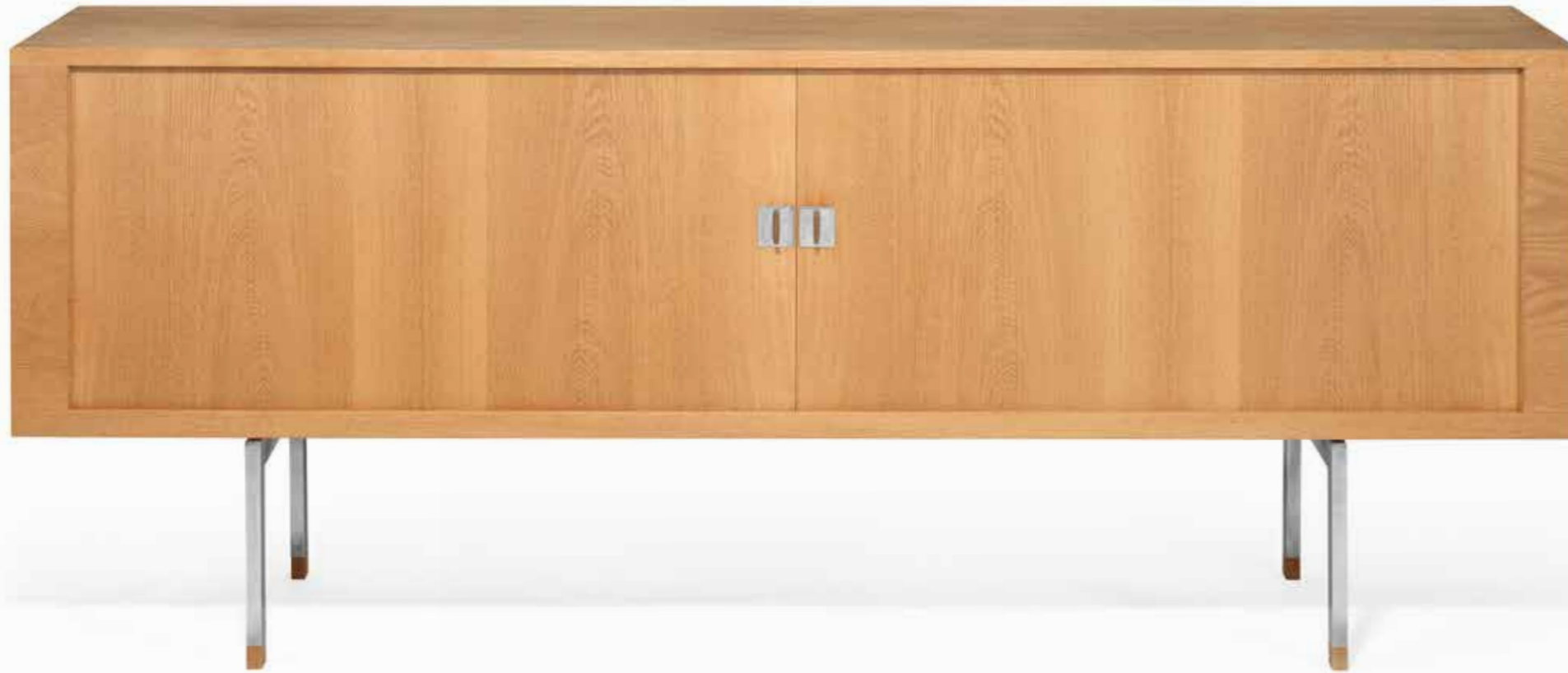
**TOM DIXON**

b. 1959

"Bird Chaise". Chaise lounge / rocking chair sculpture in Søuld eelgrass, modelled in the shape of a bird silhouette. Designed 1990. This edition made 2022 for Tom Dixon. H. 98 cm. L. 165 cm. W. 50 cm.

*Model originally designed 1990 for Cappellini. DKK 18,000 / € 2,400*





255

**255**  
**HANS J. WEGNER**

b. Tønder 1914, d. Gentofte 2007

"RY 25". Oak sideboard, steel frame with oak "shoes" and handles. Front with two tambour doors. Oak interior with adjustable shelves and trays. Extra set original legs of oak included. Designed 1959. This example manufactured 1963 by Ry Møbler. H. 79 cm. W. 200 cm. D. 49 cm.

*Provenance: Acquired by present owner autumn 1963.*

*DKK 30,000–40,000 / € 4,050–5,350*



256

**256 \***

**HANS J. WEGNER**

b. Tønder 1914, d. Gentofte 2007

"Deck Chair". Ash wood deck chair, seat and back with flag halyard, adjustable back with matte chromed metal stretcher. Loose neckrest upholstered with sand coloured fabric, white sheepskin included. Model PP 524. Designed 1958. This example made no. 1/30 in 2005 by PP Møbler, with maker's metal tag.

*DKK 25,000–30,000 / € 3,350–4,050*



257

**257**

**KNUD FRIIS**

b. 1926, d. 2010

**ELMAR MOLTKE NIELSEN**

b. 1924, d. 1997

Solid pine dining room suite comprising a table and a set of eight armchairs. Seat and back with sand coloured canvas. These examples manufactured 1977 for Friis & Moltke. Table: H. 70 cm. L. 255 cm. W. 100 cm. (9)

*Provenance: Acquired by present owner 1977.*

*DKK 25,000–30,000 / € 3,350–4,050*

**258**

**POUL HENNINGSEN**

b. Ordrup 1894, d. Hillerød 1967

"Langelinie". A pair of patinated copper pendants. Shade's insides white lacquered. These examples manufactured 1960s by Louis Poulsen. Diam. 42 cm. (2)

*Literature: "Light Years Ahead", ill. pp. 279–280.*

*DKK 20,000 / € 2,700*



258



257





259

**259**

**HANS J. WEGNER**

b. Tønder 1914, d. Gentofte 2007

"AP 71/3". Freestanding three seater oak sofa with adjustable frame. Seat with flag halyard. Loose cushions in seat, back and neck upholstered with white fabric. Designed 1968. This example manufactured approx. 1970s by AP stolen. H. 95 cm. L. 192 cm. D. 100 cm.

*Literature: Noritsugu Oda, "Hans J. Wegner's 100 Chairs", chair model ill. p. 116. DKK 25,000 / € 3,350*

**260**

**HANS J. WEGNER**

b. Tønder 1914, d. Gentofte 2007

"PP 90". A set of four rare ash wood folding chairs, armrest of natural grain leather. Designed 1976. These examples manufactured approx. 1976 by PP Møbler, with maker's label. (4)

*DKK 20,000–25,000 / € 2,700–3,350*



260



## GUNNAR AAGAARD ANDERSEN

Painter, designer, graphic artist, professor, sculptor, architect, set designer, editor, lighting artist, theorist, practitioner, illustrator, educator, debater, communicator, organizer, activist, rule breaker, enthusiast, provocateur, critic, playful, pundit, mathematician, inventor, facilitator, agitator, writer, pioneer, firebrand, influencer, aesthete. This is how Gunnar Aagaard Andersen is described on the cover of Vibeke Petersen Gether's tome of a biography "GAaA" from 2016. Gunnar Aagaard Andersen was truly a man of many talents, who is impossible to describe in just a few words. A playful child who freely experimented with everything he got his hands on.

When talking about Danish design, GAaA's furniture is not the first thing that comes to mind for most people. Nevertheless, they constitute an enormously important chapter in Danish furniture design, which is also clear to see from their rich representation in the collection at Designmuseum Denmark as well as in other important collections such as MoMA in New York and the Stedelijk Museum in Amsterdam.

From 1958-1982, GAaA lived at Munkeruphus, which today functions as a museum and, in addition to changing exhibitions, houses a permanent exhibition about Gunnar Aagaard Andersen and his enormous oeuvre.



261

261

## GUNNAR AAGAARD ANDERSEN

b. Ordrup 1919, d. Munkerup 1982

Wall mounted ash and maple backrest neckrest and a foot rest. Woven natural grain leather girths. These examples made approx. 2010 upholsterer Ivan Schlechter. (3)

*Original black and white photograph included.*

*Literature: Vibeke Petersen Gether "GAaA" 2016, ill. and described p. 523. DKK 15,000-20,000 / € 2,000-2,700*





"The chair consists of four pillows kept together by braided leather straps. The chair is frameless. The braid complies systematically with the outer as well as the inner forms that are made by the pillows together." Gunnar Aagaard Andersen, artist occasionally turned designer, was however in most peoples mind as well as probably in his own conception a painter associated with the abstract concrete simple geometric. But he describes his approach to his few and highly artistic furniture designs in the following manner: "In the act of designing furniture I once again have approached the figurative picture. Furniture is when applicable negative imprints of the human body. It is as the mould for a sculpture."



262

262

**GUNNAR AAGAARD ANDERSEN**

b. Ordrup 1919, d. Munkerup 1982

Square easy chair with woven girths of patinated natural leather. Designed 1980. This example made approx. 2010 upholsterer Ivan Schlechter. Seat: H. 36 cm. H. 60 cm. D. 58 cm. W. 76 cm.

*Literature: Vibeke Petersen Gether "GAaA" 2016, ill. and described p. 523.*

*Literature: Mobilia, No. 296/97, 1980. Ill. and described p. 103.*

DKK 50,000 / € 6,700

263

**GUNNAR AAGAARD ANDERSEN**

b. Ordrup 1919, d. Munkerup 1982

Square easy chair with woven girths of patinated natural leather. Designed 1980. This example made approx. 2010 upholsterer Ivan Schlechter, stamped. Seat: H. 36 cm. H. 60 cm. D. 58 cm. W. 76 cm.

*Literature: Vibeke Petersen Gether "GAaA" 2016, ill. and described p. 522.*

*Literature: Mobilia, No. 296/97, 1980. Ill. and described p. 103.*

DKK 50,000 / € 6,700



263



264

**264**

**EJNER LARSEN**

b. 1917, d. 1987

**AKSEL BENDER MADSEN**

b. 1916, d. 2000

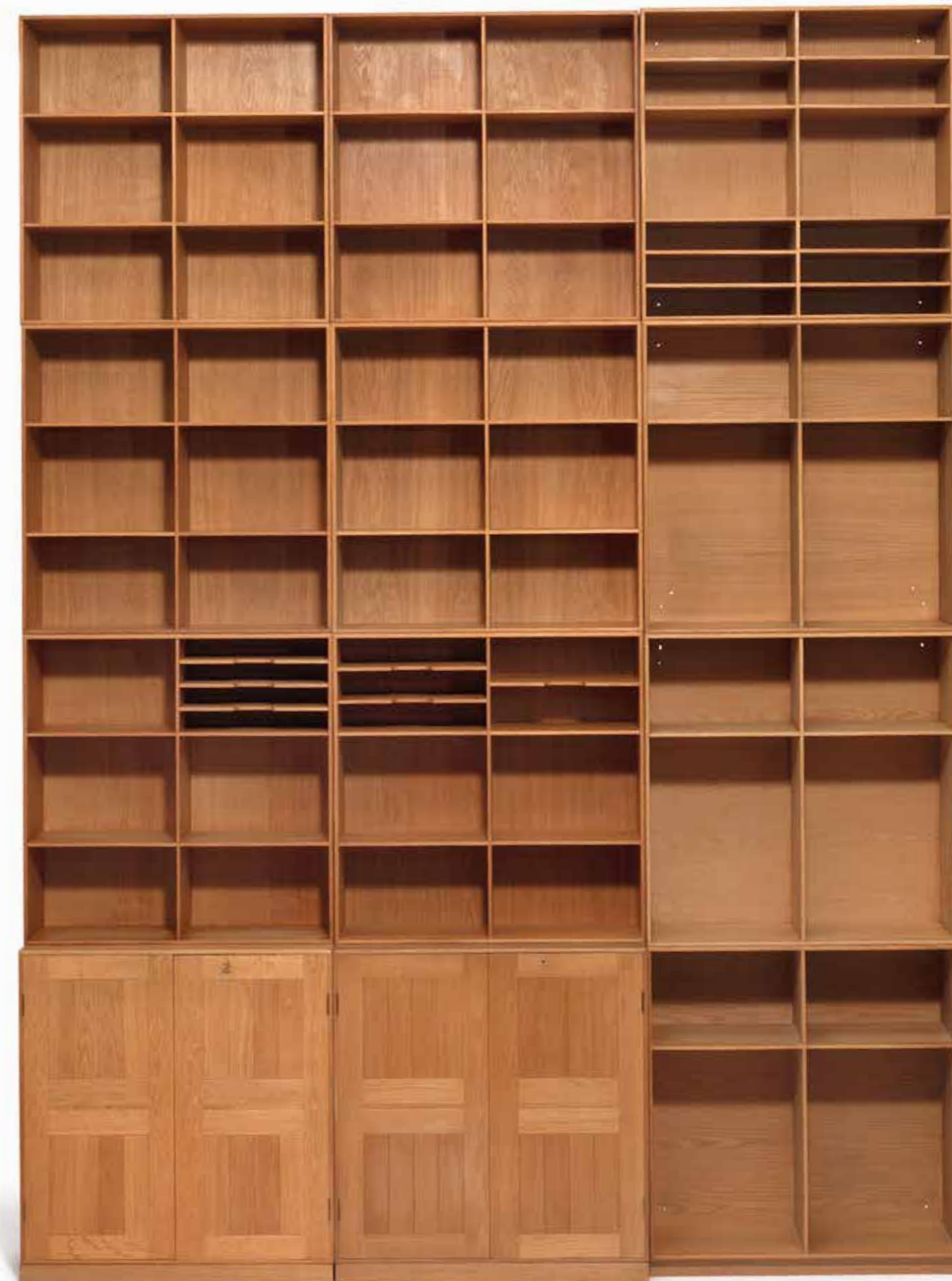
A pair of small, square oak side tables. Designed approx. 1955. These examples made 1955-1960s by cabinetmaker Willy Beck, with maker's paper label. H. 40 cm. L./W. 26.8 cm. (2) DKK 20,000 / € 2,700

**265**

**MOGENS KOCH**

b. Frederiksberg 1898, d. Copenhagen 1992

A solid oak wall unit comprising two cabinets ten bookcases and four plinths. These examples made 1970-1980s by Rud. Rasmussen Cabinetmakers, with maker's paper label. Cabinets: H./W. 76 cm. D. 36 cm. Four bookcases: H./W. 76 cm. D. 32 cm. Six bookcases: H./W. 76 cm. D. 27.5 cm. Plinths: H. 5 cm. W. 76 cm. D. 27.5/36 cm. (16) DKK 60,000 / € 8,050



265



**266**

**ARNE JACOBSEN**

b. Copenhagen 1902, d. s.p. 1971

"Oxford". Early, high back chair of laminated oak. Designed 1962. This example manufactured 1963 by Fritz Hansen, with maker's label.

*Model designed 1962 for Saint Catherine's College, Oxford, UK.*

*Literature: Carsten Thau & Kjeld Vindum, "Arne Jacobsen", 1988, ill. and referred p. 182.*

*Literature: Félix Solaguren-Beascoa, "Jacobsen", Santa & Cole Ediciones de Diseno S.A. 1991, pp. 134-135.*

*DKK 100,000 / € 13,500*



266



267

**267**

**MOGENS KOCH**

b. Frederiksberg 1898, d. Copenhagen 1992

Set of six solid Oregon pine frames. Consisting of one large, two medium, one small and two extra small frames. These examples made 1980–1990s by Rud. Rasmussen Cabinetmakers, with maker's paper label. Sizes: 25.5 x 38 cm. 38 x 50.5 cm. 50.5 x 76 cm. 76 x 101.5 cm. (6) Label no. 43518. DKK 12,000–15,000 / € 1,600–2,000

**268**

**GRETE JALK**

b. 1920, d. 2006

A patinated oak chair, curvy seat and back. Cushions in seat and back upholstered with cognac coloured leather, fitted with buttons. Designed 1963. This example made 1960s by cabinetmaker J.H. Johansens Eftf.

Model presented at The Copenhagen Cabinetmakers' Guild Exhibition at Designmuseum Danmark, 1963.

Literature: Grete Jalk [ed.]: "40 Years of Danish Furniture Design", vol. 4, p. 242–243.

Grete Jalk was one of the very few female architects and designers who during the golden age of Danish design from around 1940–1970 managed to achieve a breakthrough in a world dominated by male colleagues, and she made it all the way to the front of the pack. Grete Jalk broke with the norms and trained as a carpenter before she completed her studies at the furniture department at the School of Arts and Crafts in 1946. In her first furniture pieces from the late 1940s, she adhered to the traditions of classical Danish craftsmanship and created furniture with the forms known at the time. However, during the 1950s, she displayed a special talent for embracing wider traditions than what the classical Danish craftsmanship usually dictated. She did this by both orienting herself towards international trends and exploring the possibilities that new materials and production methods made possible, such as lamination and the bending of forms. Her zenith as a furniture designer was around the period 1960–64, where she, among other pieces, designed her iconic shell chair from 1963, which stands as one of the clearest examples from anywhere in the world of modern furniture design in the 20th century. This chair and stool are from this same fruitful period, and the set was exhibited at the Cabinetmakers' Guild Exhibition in 1963.

It is in many ways a modern anachronism, a kind of juxtaposition, which adheres to a rational geometric, industrial modernism in its idiom with an apparent simplicity, and the choice of the unpretentious Oregon pine as material. But in reality, the refined and extremely expensive carpentry was reserved for the few, and this approach to the craft slowly succumbed to more rational productions in the following decade. The chair was presented in 1963 in a nearly whitewashed 'religious' room in front of the modern-day altar of a stereo and TV. A decor which is an exquisite aesthetic pleasure, but where the chair also almost becomes an ironic commentary on its own sublimeness. Grete Jalk continued to work for many years until her death in 2006. In 1987, she was the editor of the four volume work "40 Years of Danish Furniture Design", thereby helping to preserve essential knowledge about the golden age of Danish design. It is a book that today stands as the central reference source for Danish furniture design. DKK 25,000–30,000 / € 3,350–4,050



268



269

269

**269**  
**GRETE JALK**

b. 1920, d. 2006

A teak wall unit consisting of six bookcases and a matching set of four stools. Bookcases with blue back covers, one bookcase with blue painted space dividers. Loose seat cushions upholstered with blue wool. These examples made 1960-1970s by P. Jeppesen. Bookcases: H. 118 cm. W. 108 cm. D. 30 cm. Stools: Seat H. 42 cm. (10) Model presented at the Manufacturers' Association Furniture Fair in Fredericia 1962.

Literature: *Mobilia* no. 82-83, 1962, p. 64.

DKK 25,000-30,000 / € 3,350-4,050



269





270

**270**<sup>ARR</sup>  
**BODIL MANZ**

b. Frederiksberg 1943

A cylindrical, thin porcelain vase. Decorated on the inside and outside with glazed, geometric decor in shades of black, greyish blue, yellow, blue and violet. Signed monogram. Unique. H. 15.2 cm. Diam. 18.2-18.5 cm.

DKK 12,000-15,000 / € 1,600-2,000

**271**  
**BENT KNUDSEN**

b. Fredericia 1924, d. Kolding 1997

A sterling silver bracelet with square, rounded and edged links. Marked Bent K., 925 S. Design no. 77. Weight 93 g. L. 18.7 cm.

Provenance: Private collection, Denmark.

Literature: Jens Ingvordsen: "Smykkeskrinet - Dansk smykkekunst 1900-2000", ill. p. 242.

DKK 6,000 / € 805



271

**272**  
**SIGVARD BERNADOTTE**

b. 1907, d. 2002

A sterling silver bracelet with edged links. Georg Jensen after 1945. Design no. 73. Designed 1938. Weight 70 g. L. 19 cm.

Provenance: Private collection, Denmark.

Literature: Jörg Schwandt: "Simply Danish", ill. p. 86.

Literature: David A. Taylor: "Georg Jensen Jewelry", ill. p. 85.

DKK 6,000 / € 805



272

**273**  
**SØREN GEORG JENSEN**

b. Copenhagen 1917, d. s.p. 1982

A sterling silver bracelet with sculptural, edged links. Georg Jensen after 1945. Design no. 114. Designed 1957. Weight 70 g. L. 19.5 cm. W. 3 cm.

Provenance: Private collection, Denmark.

Literature: David A. Taylor: "Georg Jensen Jewelry", ill. p. 94.

DKK 8,000-10,000 / € 1,050-1,350



273



274

**274**<sup>ARR</sup>  
**BO KRISTIANSEN**

b. Göteborg 1944, d. Copenhagen 1991

A cylindrical stoneware lid jar with incised relief letters. Partly decorated with blue, brown, green and grey glaze. Lid decorated with grey, blue, brown and purple glaze. The inside with purple glaze. Unsigned. Unique. H. 23.8 cm. Diam. 24.5 cm.

DKK 30,000-40,000 / € 4,050-5,350



274 the other side

275

**SØREN GEORG JENSEN**

b. Copenhagen 1917, d. s.p. 1982

A two-armed sterling silver candlestick with smooth surface. Georg Jensen 1945-1977. Design no. 1087. Designed 1960. Weight 843 g. H. 17.7 cm. W. max. 13.4 cm. D. max. 6 cm. Inner diam. of candle holders 2.3 cm.

*A matching vintage Georg Jensen box is included.*

*Literature: Janet Drucker: "Georg Jensen - A Tradition of Splendid Silver", ill. p. 237.*

*Literature: David A. Taylor, Jason W. Laskey: "Georg Jensen Holloware - The Silver Fund Collection", ill. p. 313.*

DKK 15,000-20,000 / € 2,000-2,700



275



276

276

**BENTE BONNÉ**

b. 1929, d. 1996

A sterling silver jewellery set comprising a necklace, a bracelet and a pair of earrings. Sculptural, edged links decorated with blue and turquoise enamel. Georg Jensen after 1945. Design no. 130 and 132. Designed 1960. Total weight 199 g. Necklace: L. approx. 42.5 cm. Bracelet: L. 17.5 cm. Earrings: H. 3.3 cm. (3)

*Provenance: Private collection, Denmark.*

*Literature: Janet Drucker: "Georg Jensen - A Tradition of Splendid Silver", ill. p. 155.*

*Literature: David A. Taylor: "Georg Jensen Jewelry", ill. p. 280.*

DKK 20,000-25,000 / € 2,700-3,350

277<sup>ARR</sup>

**ALEV EBÜZZIYA SIESBYE**

b. Istanbul 1938

A large, circular stoneware dish decorated with azure glaze. Line decor and cloud formations partly with turquoise glaze. Signed alev 90. Unique. H. 12.7-13.7 cm. Diam. 52.5-53 cm.

*DKK 50,000 / € 6,700*



277

## Anna Thommesen

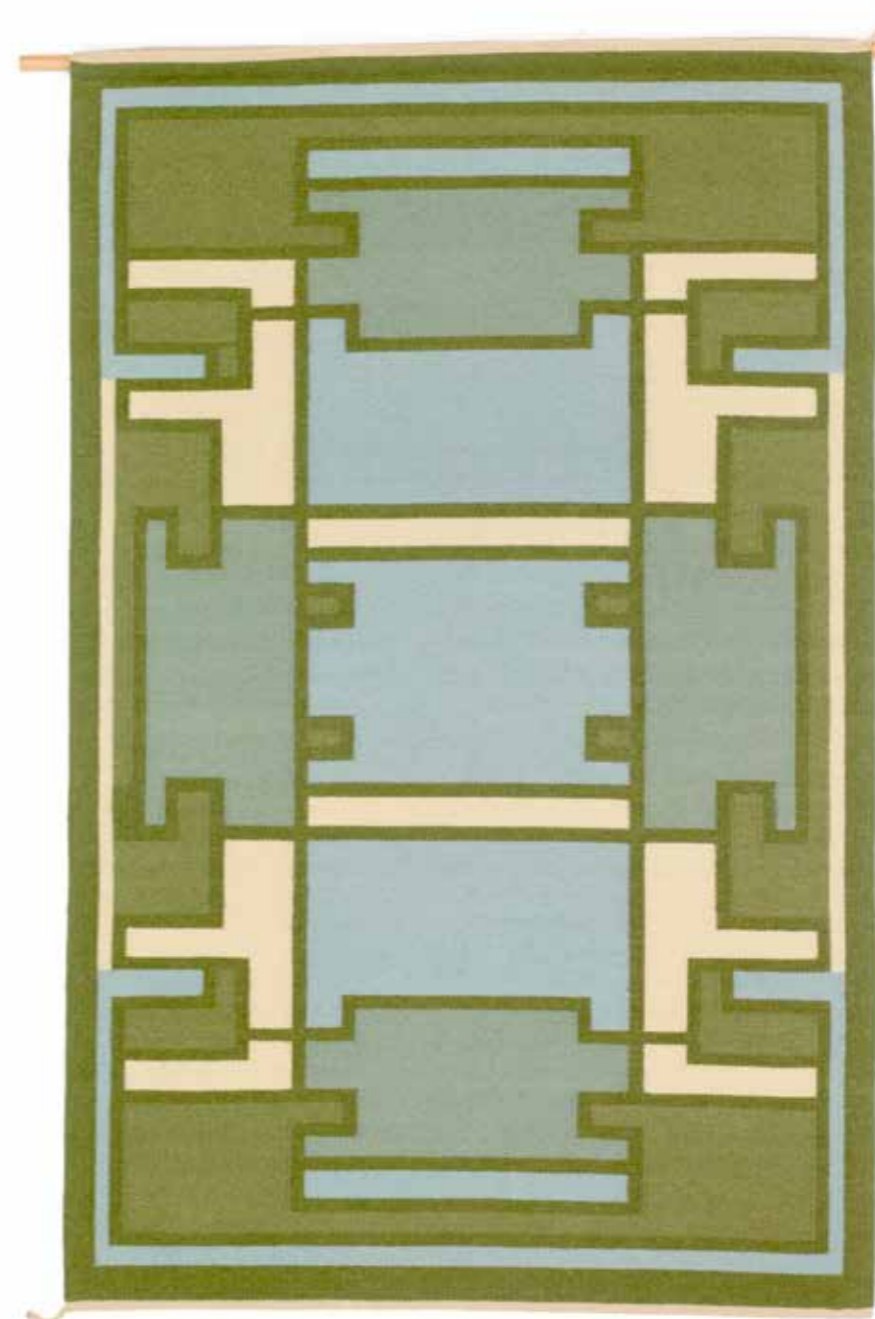
Anna Thommesen was a self-taught Danish painter and weaver. Already during the 1940s, the weaving became the primary way she unfolded her creativity. She is mostly known for her straight-line, geometric patterns. As is the case with the following carpets, they are usually symmetrical, both vertically and horizontally. Her gentle and natural colouring is due to her approach to the colours. She was inspired by the colours in the Danish nature, and she taught herself early on how to boil down plants to subsequently dye her yarn with these natural pigments. The work process always started with a watercolour inspired by the colours of nature, and the colours were in this way always the starting point in her work. She developed the patterns based on the colours used. This work process resulted in weavings that showed a harmonious unified whole in the interaction between colour, shape and pattern.



In the 1950s, she developed her style to include more complicated patterns which required the greater technical ability she had achieved at this point. However, she returned to the more simpler patterns that have become characteristic of her work, and which she is primarily associated with as an artist.

Anna Thommesen's flat-woven handmade carpets are of the highest quality and one of the best examples of sublime Danish textile craft. Her works are found in the collection at The Designmuseum Denmark, the exhibition at the Amalienborg Museum in Christian VIII's Palace and the National Gallery of Denmark.

In 1957, Anna Thommesen had a collaborative exhibition with Finn Juhl at Designmuseum Denmark. From 1940 until her death in 2004, Anna Thommesen was married to the sculptor Erik Thommesen. Finn Juhl's furniture, Anna Thommesen's carpets and Erik Thommesen's sculptures are often shown together. For example, in Finn Juhl's house at Ordrupgaard.



278

278<sup>ARR</sup>

**ANNA THOMMESEN**

b. 1908, d. 2004

A unique, handwoven wool carpet in flatweave technique. Geometric motif in shades of green, blue and white. This example designed and made 1973 by Anna Thommesen. L. 195 cm. W. 122 cm.

DKK 60,000–80,000 / € 8,050–10,500

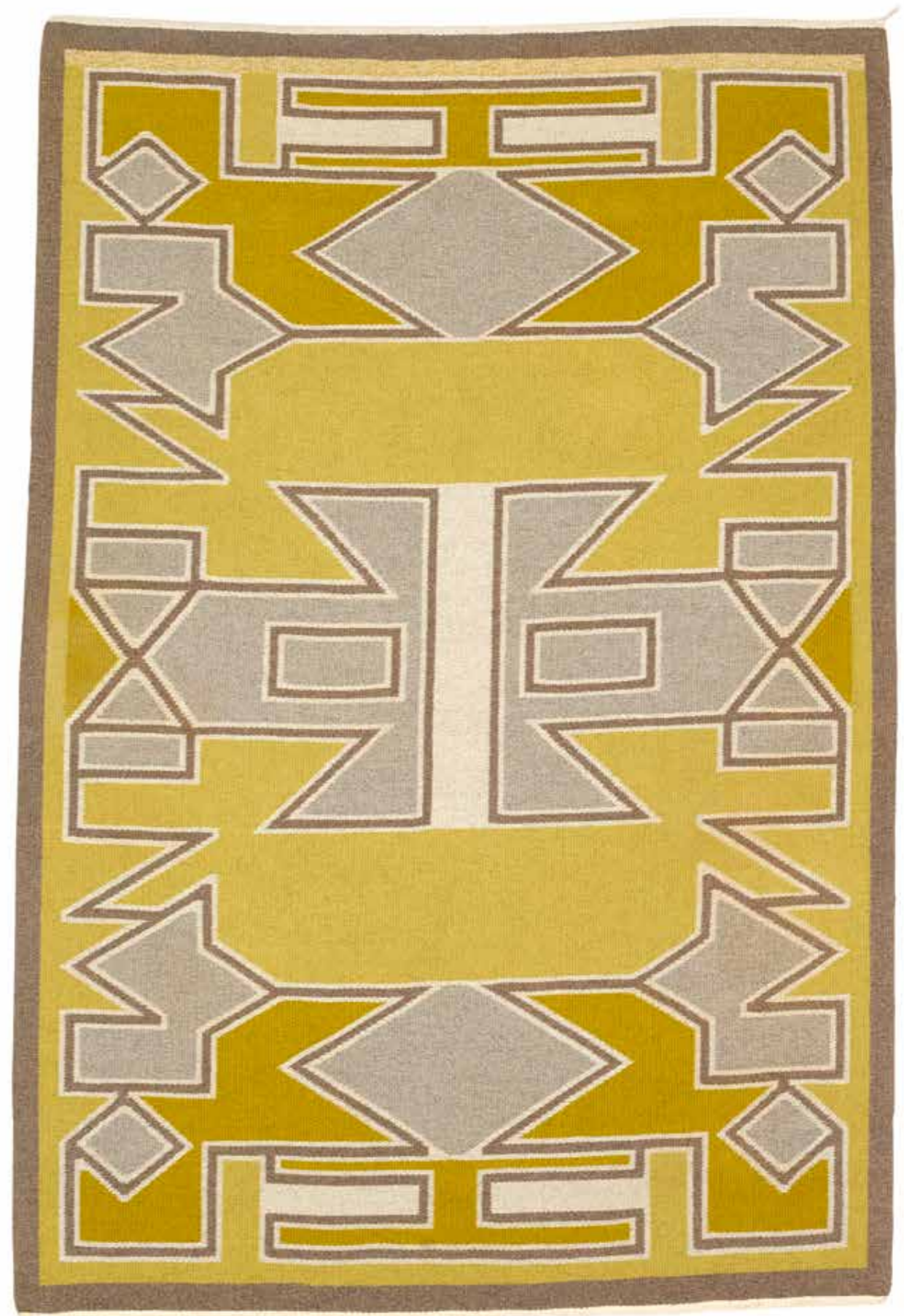
**279**<sup>ARR</sup>

**ANNA THOMMESEN**

b. 1908, d. 2004

A unique, handwoven wool carpet in flatweave technique. Geometric motif in shades of yellow and grey. This example designed and made mid-1960s by Anna Thommesen. L. 300 cm. W. 200 cm.

*DKK 150,000 / € 20,000*



**279**



280

280<sup>ARR</sup>

**ANNA THOMMESEN**

b. 1908, d. 2004

Handwoven wool carpet in flatweave technique. Geometric motif in shades of blue, yellow, green and brown. This example designed and made 1950–1960s by Anna Thommesen. L. 110 cm. W. 71.5 cm.

Provenance: Artist Arne Johannessen. DKK 20,000–25,000 / € 2,700–3,350

281<sup>ARR</sup>

**ANNA THOMMESEN**

b. 1908, d. 2004

A unique, handwoven wool carpet in flatweave technique. Geometric motif in shades of brown and blue. This example designed and made 1970s by Anna Thommesen. L. 236 cm. W. 145 cm. DKK 80,000–100,000 / € 10,500–13,500



281



282

**282**

**POUL KJÆRHOLM**

b. Østervrå 1929, d. Hillerød 1980

"PK 25". A pair of lounge chairs with matte chromed steel frame. Seat and back with flag halyard. Designed 1951. These examples made approx. 1960s by E. Kold Christensen, not stamped. (2)

*Literature: ed. Christoffer Harlang a.o "Poul Kjærholm", Arkitektens Forlag, 1999, model ill. p. 150-151.*

*Literature: Michael Sheridan, "Poul Kjærholm Møbelarkitekt", Louisiana 2006, model ill. p. 25. DKK 150,000 / € 20,000*





**283** <sup>ARR</sup>

**VIBEKE KLINT**

b. Frederiksberg 1927, d. 2019

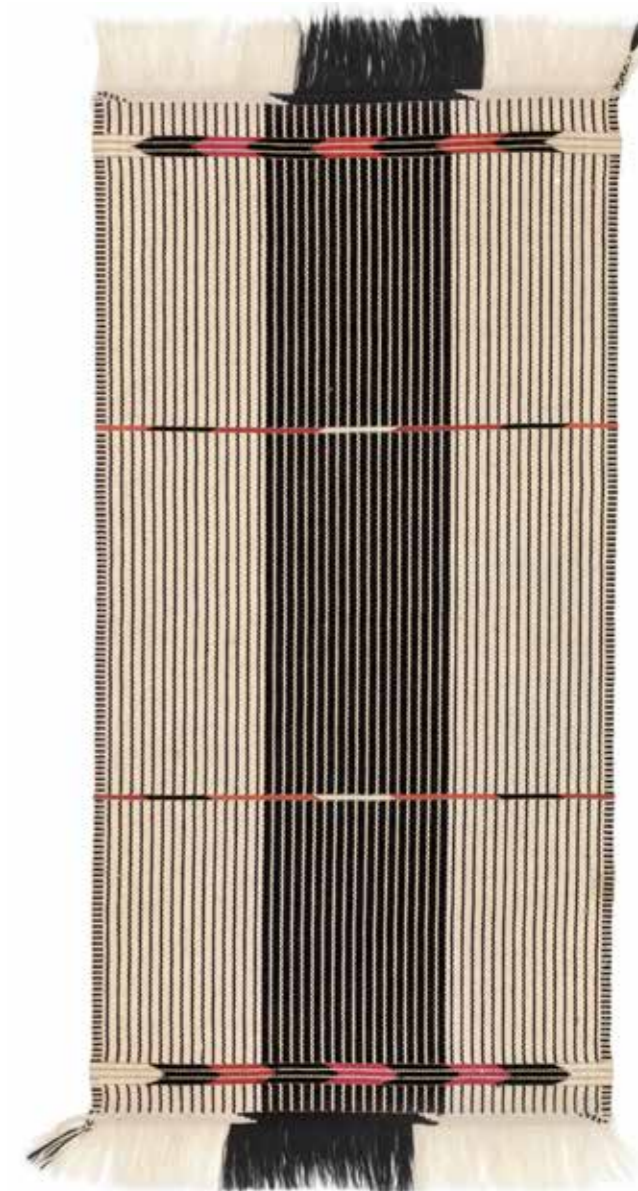
Handwoven unique wool and horse hair runner. Black and white base with red and green details. Made approx. 1970-1980s by Vibeke Klint, marked. L. 165 cm. W. 83 cm. *DKK 20,000 / € 2,700*

**284**

**POUL KJÆRHOLM**

b. Østervrå 1929, d. Hillerød 1980

"PK 91". A pair of folding stools with matte chromed steel frame. Seat with sand coloured canvas. Designed 1961. These examples manufactured approx. 1970s by E. Kold Christensen, one stamped. (2) *DKK 50,000 / € 6,700*



**283**



**284**





285

**285**

**PREBEN FABRICIUS**

b. 1931, d. 1984

**JØRGEN KASTHOLM, ATTRIBUTED**

b. Roskilde 1931, d. Düsseldorf 2007

Long ash wood sideboard, mounted on angular steel frame. Front with three drawers and three fold down doors below, interior with pull-out trays and adjustable shelves. Angular steel handles. This example manufactured 1966-1970, presumably by cabinetmaker Poul Bachmann. H. 80.5 cm. L. 300 cm. D. 50 cm.

*DKK 40,000-60,000 / € 5,350-8,050*

**286**

**POUL KJÆRHOLM**

b. Østervrå 1929, d. Hillerød 1980

"PK 11". A pair of armchairs with chromed steel frame and ash wood back. Seat upholstered with patinated black leather. Designed 1957. These examples manufactured approx. 1970s by E. Kold Christensen, stamped by maker. (2)

*Literature: "Poul Kjærholm", Arkitektens Forlag, 1999, pp. 94-95.*

*DKK 30,000-40,000 / € 4,050-5,350*



286



287

**287**

**PREBEN FABRICIUS**

b. 1931, d. 1984

**JØRGEN KASTHOLM, ATTRIBUTED**

b. Roskilde 1931, d. Düsseldorf 2007

Circular ash wood dining table with extension and eight extra leaves, hereof two of ash wood. Mounted on angular steel frame. This example manufactured 1966-1970, presumably by cabinetmaker Poul Bachmann. H. 72 cm. Diam. 144 cm. Leaves: W. each 54.5 cm.

*DKK 20,000-30,000 / € 2,700-4,050*

**288**

**POUL KJÆRHOLM**

b. Østervrå 1929, d. Hillerød 1980

"PK 9". A set of 12 chairs with chromed steel frame. Seat and back upholstered with original, patinated red leather. Designed 1960. These examples manufactured 1970-1980s by E. Kold Christensen, stamped. (12)

*DKK 200,000-250,000 / € 27,000-33,500*



288

**289**

**BØRGE MOGENSEN**

b. Aalborg 1914, d. Gentofte 1972

"Øresund". A teak wall unit consisting of four cabinets. Two cabinets with glass doors, other two with teak doors, brass fittings. Interiors with adjustable teak shelves. Model BM 68. Designed 1958. These examples manufactured 1960s by P. Lauritsen & Søn. Retailer by Illums Bolighus, with retailer's metal tag. H. 203 cm. W. 109 cm. D. 38 cm. (4)

*DKK 100,000 / € 13,500*



**289**



290

**290**  
**BØRGE MOGENSEN**

b. Aalborg 1914, d. Gentofte 1972

Freestanding two seater sofa with mahogany legs. Sides, back and loose cushions upholstered with original, patinated reddish-brown leather. Model 2212. Designed 1962. This example manufactured 1960-1970s by Fredericia Stolefabrik, with maker's labels. L. 185 cm. *DKK 40,000 / € 5,350*

**291**

**BØRGE MOGENSEN**

b. Aalborg 1914, d. Gentofte 1972

"The Hunting Chair". A pair of low, solid oak lounge chairs. Seat and back with patinated natural grain leather. Model 2229. Designed 1950. These examples manufactured approx. late 1990s by Fredericia Furniture. (2)  
*Literature: Grete Jalk [ed.]: "40 Years of Danish Furniture Design", vol. 3, p. 154–157.*

*Literature: Arne Carlsen: "Møbler tegnet af Børge Mogensen", ill. p. 42–43.  
DKK 80,000–100,000 / € 10,500–13,500*



291





292

292 <sup>ARR</sup>

**PER WEISS**

b. Melby 1953, d. 2023

A large, footed stoneware vase with incised relief decor. Decorated with blue, greyish blue and transparent glaze with ochre green elements. The inside decorated with bluish black glaze. Marked monogram. Unique. Mounted on a black lacquered mdf plinth. Vase: H. 96 cm. Diam. 71 cm. Plinth: H. 50. W./L. 79.5 cm. Total: H. 146 cm.

*DKK 60,000 / € 8,050*

293 <sup>ARR</sup>

**HENNING KOPPEL**

b. Copenhagen 1918, d. s.p. 1981

A sculptural, footed sterling silver bowl. Georg Jensen with date letter K10=1984. Design no. 980 A. Designed 1948. Weight 3399 g. H. 10.8-15.5 cm. Diam. 38.5-40 cm. This design was awarded a gold medal at the Triennale in Milan in 1951.

*Literature: Niels-Jørgen Kaiser: "Henning Koppels Verden", ill. p. 65.*

*Literature: Viggo Sten Møller: "Henning Koppel", ill. p. 11.*

*Literature: David A. Taylor & Jason W. Laskey: "Georg Jensen Holloware - The Silver Fund Collection", ill. p. 295.*

*DKK 100,000 / € 13,500*



293



294

294

**ASGER JORN**

b. Vejrum 1914, d. Århus 1973

A sterling silver bangle with engraved motif. Unsigned. Marked 925 S. Weight 102 g. Made ca. 1960–1970. Inner dimensions approx. 5 x 5.7 cm. *In connection with the exhibition "HELT PRIVAT - Asger Jorn's Jewellery" (18/8-21/10 2018), Museum Jorn writes: "...from the early years in Paris in the 1930s, he made, designed and had personal jewellery made - for his three wives, daughters, sisters and lovers. Jorn's jewellery was, unlike many artists of his time, not made in a series intended for sale, but created and given straight from the heart. Intimacy, love, separation and strife are motifs and driving forces in Jorn's jewellery production. [...] The inspiration for the jewellery came from many sources: Impressions from the lively art scene of the 1930s with people such as Miró, Picasso, Legér and Paul Klee. The inspiration also came from the stylized expression of ritual masks and finally from the more symbolic and erotically charged imagery of surrealism".*

DKK 8,000–10,000 / € 1,050–1,350



295

295

**SØREN GEORG JENSEN**

b. Copenhagen 1917, d. s.p. 1982

A sterling silver bracelet with curved, fluted links. Georg Jensen after 1945. Design no. 97. Weight 62 g. L. 17.3 cm. Inner dimensions when closed: 5.8 x 2.5 cm.

Provenance: Private collection, Denmark.

DKK 6,000 / € 805



296

296

**ALLAN SCHMIDT**

b. Århus 1923, d. Charlottenlund 1989

Three cylindrical stoneware vases. One with horizontal, fluted relief decor. Decorated with resp. transparent ochre and turquoise blue glaze. Signed AS, two ochre marked resp. 533-18 and 667-39. Signed HAK, marked Denmark. Made 1970s by Kähler. H. resp. 19, 37 and 38 cm. Diam. resp. 11.5, 17 and 21 cm. (3)

DKK 15,000–18,000 / € 2,000–2,400

297<sup>ARR</sup>

**PER WEISS**

b. Melby 1953, d. 2023

A large stoneware floor vase with incised relief decor. Decorated with reddish brown, sand coloured, blue and transparent glaze. The inside decorated with bluish black glaze. Marked monogram. Unique. H. 90 cm. Diam. 65 cm.

*DKK 100,000 / € 13,500*



297





**298**

**HANS J. WEGNER**

b. Tønder 1914, d. Gentofte 2007

"JH 719". Easy chair with frame of original red lacquered beech. Seat and back with flag halyard, fitted with brass cylinders. Loose cushions in seat and neck upholstered with sand coloured canvas. Designed 1968. This example made 1980s by PP Møbler. *DKK 30,000 / € 4,050*

**299**

**HANS J. WEGNER**

b. Tønder 1914, d. Gentofte 2007

"JH 719". Easy chair with frame of original red lacquered beech. Seat and back with flag halyard, fitted with brass cylinders. Loose cushions in seat and neck upholstered with sand coloured canvas. Designed 1968. This example made 1980s by PP Møbler. *DKK 30,000 / € 4,050*



**298**



**299**



300

**300**  
**HANS J. WEGNER**

b. Tønder 1914, d. Gentofte 2007

"Butterfly". A pair of red lacquered wood lounge chairs. Seat and back upholstered with light, blue-striped fabric. Model GE 460. Designed 1977. These examples manufactured late 1970-1980s by Getama. (2) *DKK 20,000 / € 2,700*

**301**  
**POUL KJÆRHOLM**

b. Østervrå 1929, d. Hillerød 1980

"PK 0". A pair of black lacquered, sculptural lounge chairs. Designed 1952. These examples manufactured 1997 by Fritz Hansen, with metal tag marked no. 221 and 222. (2)  
*Poul Kjærholm designed "PK 0" for Fritz Hansen in 1952. The chair was produced in 1997 in a limited edition of 600 pieces.*  
*DKK 60,000-80,000 / € 8,050-10,500*



301



**302**

**HANS J. WEGNER**

b. Tønder 1914, d. Gentofte 2007

"CH 33". A set of eight black lacquered chairs, moulded plywood seat and back. Designed 1957. These examples manufactured 1970s by Carl Hansen & Søn. (8)

*Literature: "Mobilia" no. 30, January 1958, p. 30.*

*Literature: "Dansk Kunsthåndværk", No. 8-9 1957, on advertisement pages.*

*DKK 20,000 / € 2,700*



**303**

**BØRGE MOGENSEN**

b. Aalborg 1914, d. Gentofte 1972

"The Spanish Chair". A pair of patinated oak armchairs. Seat and back with patinated natural grain leather. Model 2226. Designed 1958. These examples manufactured 1970s by Fredericia Stolefabrik, with maker's paper label. (2)

*Provenance: Acquired 1970s by present owner.*

*Model presented at The Copenhagen Cabinetmakers' Guild Exhibition at Designmuseum Danmark, 1958.*

*Literature: Grete Jalk [ed.]: "40 Years of Danish Furniture Design", vol. 4, pp. 66–69.*

*Literature: Arne Karlsen, "Møbler tegnet af Børge Mogensen", ill. pp. 84–85.*

*DKK 40,000–50,000 / € 5,350–6,700*



303





304



305

**304**

**BØRGE MOGENSEN**

b. Aalborg 1914, d. Gentofte 1972

"BM 1". Set of six very early patinated oak chairs. Seat with original pleated seagrass. Designed 1958. These examples manufactured 1960s by C.M. Madsen, stamped by maker. (6) *DKK 40,000 / € 5,350*

**305**

**BØRGE MOGENSEN**

b. Aalborg 1914, d. Gentofte 1972

A patinated teak chest of drawers. Front with eight drawers, fitted with special brass handles. Model A 234. This example manufactured 1960s by C.M. Madsen for FDB, stamped. H. 93.5 cm. W. 122 cm. D. 44.5 cm. *Literature: FDB catalogue 1964-1965, p. 38. DKK 20,000 / € 2,700*



306

**BØRGE MOGENSEN**

b. Aalborg 1914, d. Gentofte 1972

"Hunting Chair". A very rare and early example lounge chair of solid, patinated oak. Seat and back with original patinated natural leather, made by saddle maker Dahlman. Designed 1950. Prototype made 1950 by cabinetmaker Erhard Rasmussen. Royal saddle maker "Brødrene F. & L. Dahlman's Eft." made the leatherwork on all 12 examples of the "Hunting Chair", where the frame was made by cabinetmaker Erhard Rasmussen. The leatherwork on these first examples was consequently in a very fine quality, in terms of craftsmanship on par with the wooden frames supplied by Erhard Rasmussen. The leather was supplied by the Danish tannery Dominion Belting.

Literature: Grete Jalk [ed.]: "40 Years of Danish Furniture Design", vol. 3, p. 154–157.  
Literature: Thomas Mogensen, "Et fuldt møbleret liv", ill. pp. 166–171.

DKK 200,000–300,000 / € 27,000–40,500

306



## IVAN SCHLECHTER

When talking about Danish furniture, the focus has previously been mostly on the cabinetmaker, today the primary focus is on the furniture designer. An often slightly overlooked person in the process, however, is the furniture upholsterer. It is rare that we get to know who has upholstered a piece of furniture. The exception, however, is Ivan Schlechter.

Schlechter was primarily known for his work as an upholsterer and is a well-known name for connoisseurs of Danish furniture design.

He has worked with furniture upholstery for many of the biggest Danish designers and cabinet-makers during the golden age of Danish furniture design, including Finn Juhl, Poul Kjærholm, Mogens Koch, Edvard & Tove Kindt-Larsen, Hans J. Wegner and Gunnar Aagaard Andersen.

Already during Schlechter's time as an apprentice in the 1930s, he met the young furniture designers, and in collaboration with them he developed the prototypes for some of the biggest Danish furniture icons.

In the later years of his life and until he died in 2018 at the age of 99, Schlechter ran a workshop together with his friend Ole Gjerløv-Knudsen, where he worked with leather and upholstery until the very end.



307

### 307 IVAN SCHLECHTER

b. 1918, d. 2018

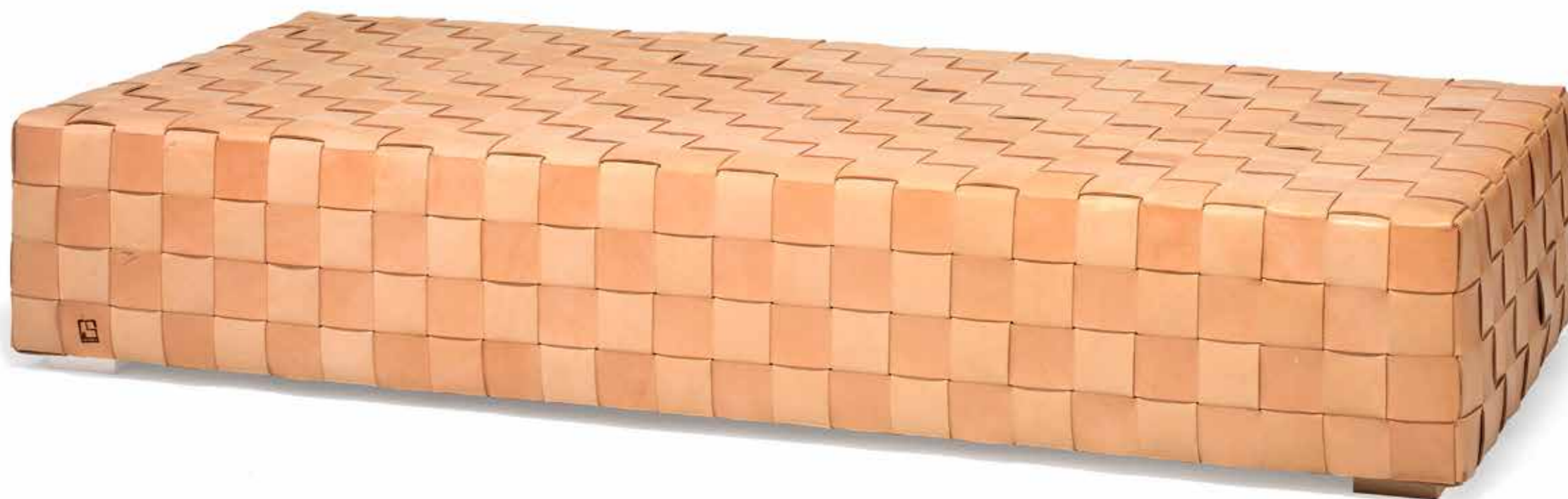
Large circular ottoman upholstered with patinated natural leather. This example made 1990s by upholsterer Ivan Schlechter, stamped. H. 27 cm. Diam. 100 cm.

*Provenance: Made to order by Ivan Schlechter for present owner.*

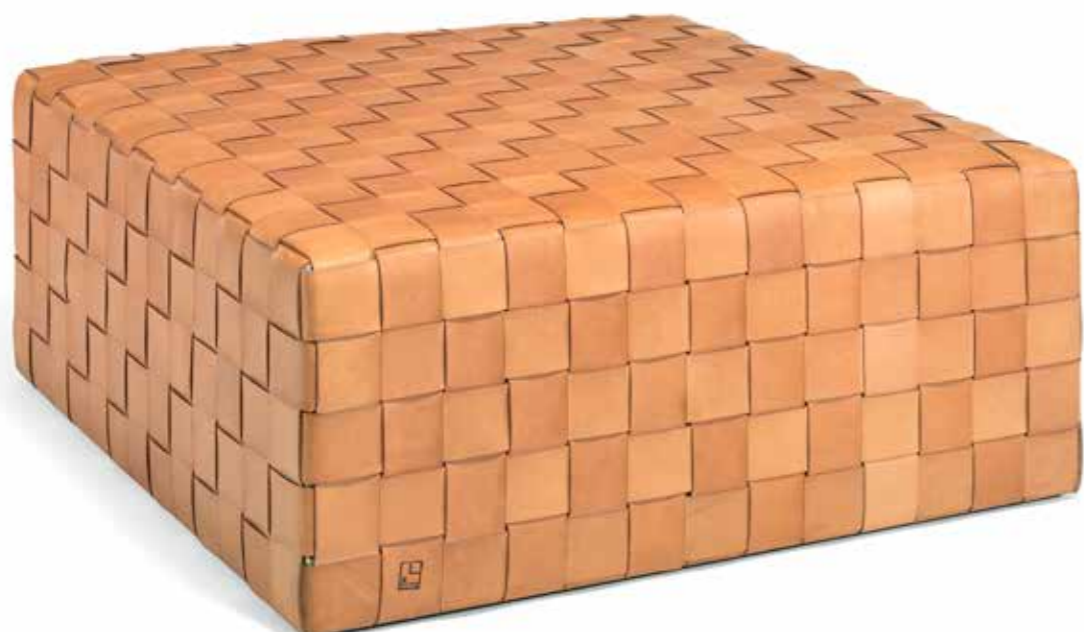
*DKK 30,000–40,000 / € 4,050–5,350*







309



308

**308**  
**IVAN SCHLECHTER**

b. 1918, d. 2018

Large square ottoman / coffee table with woven girths of patinated natural leather. This example made approx. 2010 by upholsterer Ivan Schlechter, with maker's stamp. H. 42 cm. L/W. 100 cm.

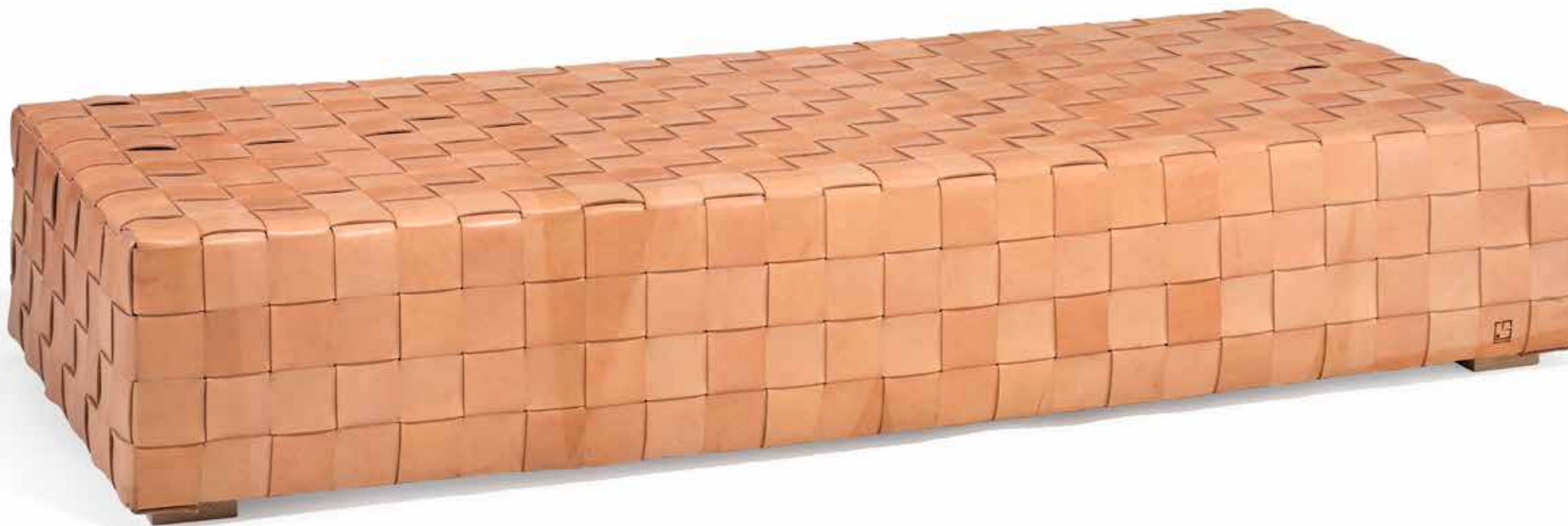
*DKK 30,000–40,000 / € 4,050–5,350*

**309**  
**IVAN SCHLECHTER**

b. 1918, d. 2018

Daybed covered with woven girths of patinated natural leather. This example made approx. 2010 by upholsterer Ivan Schlechter, with maker's stamp. H. 34 cm. L. 191 cm. W. 87 cm.

*DKK 40,000–50,000 / € 5,350–6,700*



310

**310**  
**IVAN SCHLECHTER**

b. 1918, d. 2018

Daybed covered with woven girths of patinated natural leather. This example made approx. 2010 by upholsterer Ivan Schlechter, with maker's stamp. H. 34 cm. L. 191 cm. W. 87 cm.

*DKK 40,000–50,000 / € 5,350–6,700*

**311**  
**IVAN SCHLECHTER**

b. 1918, d. 2018

Ottoman with woven girths of patinated natural leather, mounted on castors. This example made approx. 2010 by upholsterer Ivan Schlechter, not stamped. H. 41 cm. L. 56 cm. W. 49 cm.

*DKK 15,000 / € 2,000*



311

312<sup>ARR</sup>

**HANS SANDGREN JAKOBSEN**

b. København 1963

A solid ash stool with 35 turned sticks with a funnel-shaped top inspired by the midwife's Pinard horn and the stamens of the flower, mounted in a rectangular block with a concave curved top. This example made and stamped 2010s in a numbered edition by Werner, Denmark. This copy No. 15. H. 43-46. L. 74. B. 38.

*"The Unrockable" and its counterpart "The Rockable" were designed in 1999 for the exhibition "Planken Ud/Walk The Plank". 21 established furniture designers were paired with 21 young cabinetmakers by lottery and had to make at least one piece of furniture together.*

*Hans Sandgren Jakobsen is a trained cabinetmaker and throughout his career has attended the Royal Danish Academy of Fine Arts, The Danish School of Design, worked for a year in Japan and then worked in Nanna Ditzel's design studio from 1990-1997, where he developed his material curiosity.*

*Literature: Masterpieces - 100 years of Danish cabinet-making. Illustrated and described pp. 92-93. Here the stool is described: "...There is no doubt that Hans Sandgren Jakobsen had a different agenda than just creating a piece of furniture for an exhibition, and the choice of the midwife's stethoscope as a supporting element in more than one sense gives the geometric unfoldings a mischievous and humanistic twist. The stools have not been easy to make, but on the other hand they are good examples of the fruitful dialogue between a visionary designer and a motivated craftsman". - Mike Roemer.*



312

313

**BØRGE MOGENSEN**

b. Aalborg 1914, d. Gentofte 1972

"The Hunting Chair". Low lounge chair with solid ash frame. Seat and back with patinated natural grain leather. Model 2229. Designed 1950. This example made approx. 1969 by cabinetmaker Erhard Rasmussen. Provenance: Acquired 1969 by present owner's father. Hence by descent in the family.

*Literature: Grete Jalk [ed.]: "40 Years of Danish Furniture Design", vol. 3, p. 154-157.*

*Literature: Arne Carlsen: "Møbler tegnet af Børge Mogensen", ill. p. 42-43. Literature: Noritsugu Oda: "Danish Chairs", ill. p. 128-129.*

*DKK 40,000-60,000 / € 5,350-8,050*



313

314

**NANNA DITZEL**

b. Copenhagen 1923, d. s.p. 2005

Circular maple three-tier coffee table, top with removable fruit bowl.  
Model 101A. Designed 1980. This example made 1980s by Brdr. Krüger's  
Trædrejeri, stamped. H. 40/50/62.5 cm. Diam. 120 cm.  
*Model presented at SE/Snedkernes Autumn Exhibition 1981.*

*Literature: Catalogue from the exhibition p. 6.*

*Literature: Brdr. Krüger catalog approx. 1981–1982.*

*DKK 75,000 / € 10,000*



314



315

315

**POUL HENNINGSEN**

b. Ordrup 1894, d. Hillerød 1967

"Artichoke". Pendant with copper leaves with white lacquered  
inside. Designed 1958. This example manufactured approx.  
1960 by Louis Poulsen. Diam. 60 cm.  
*Early version with centered suspension.*

*Literature: "Tænd!", ill. and referred to on pp. 276 – 280.*

*DKK 25,000–30,000 / € 3,350–4,050*

**316**

**HANS J. WEGNER**

b. Tønder 1914, d. Gentofte 2007

"JH 512". A patinated oak folding chair. Seat and back with woven cane. Model JH 512. Designed 1949. This example made approx. 1960s by cabinetmaker Johannes Hansen, stamped.

*Model presented at The Copenhagen Cabinetmakers' Guild Exhibition at Designmuseum Danmark, 1949.*

*Literature: Grete Jalk [ed.]. "40 Years of Danish Furniture Design", Vol. 3, pp. 98-99. DKK 30,000-40,000 / € 4,050-5,350*



**316**



**317**

**317**

**HANS J. WEGNER**

b. Tønder 1914, d. Gentofte 2007

"JH 512". A patinated oak folding chair. Seat and back with woven cane. Wall mounting included. Model JH 512. Designed 1949. This example made approx. 1950s by cabinetmaker Johannes Hansen, not stamped. (2)

*Model presented at The Copenhagen Cabinetmakers' Guild Exhibition at Designmuseum Danmark, 1949.*

*Literature: Grete Jalk [ed.]. "40 Years of Danish Furniture Design", Vol. 3, pp. 98-99. DKK 30,000-40,000 / € 4,050-5,350*

**318**

**HANS J. WEGNER**

b. Tønder 1914, d. Gentofte 2007

"The Chair". A solid teak armchair. Seat and back with woven cane. Model JH 501. Designed 1949. This example made 1950-1960s by cabinetmaker Johannes Hansen, stamped.

*Model presented at The Copenhagen Cabinetmakers' Guild Exhibition at Designmuseum Danmark, 1949.*

*Literature: Grete Jalk [ed.]. "40 Years of Danish Furniture Design", Vol. 3, p. 98-101 and p. 140-142. DKK 25,000 / € 3,350*



**318**

319

**HANS J. WEGNER**

b. Tønder 1914, d. Gentofte 2007

"Valet Chair". Sculptural, solid pine chair. Solid teak seat with storage space underneath. Model JH 540. Designed 1953. This example made 1970s by cabinetmaker Johannes Hansen, stamped.

*Provenance: Birthday present given to the current owner in 1980.*

*Model presented at the Cabinetmaker's Guild Exhibition at Designmuseum Danmark, 1953.*

*Literature: Grete Jalk [ed]: "40 Years of Danish Furniture Design", vol. 3, pp. 244-247. DKK 100,000-125,000 / € 13,500-17,000*



## INDEX

### A

Aagaard Andersen, Gunnar 261  
262, 263

### B

Bender Madsen, Aksel 264  
Bernadotte, Sigvard 272  
Bo, Jørgen 219  
Bonné, Bente 276

### D

Dahlquist, Ibe 225  
Danish Cabinetmaker 217  
Danish Furniture Design 231  
Ditzel, Jørgen 236, 237, 242  
Ditzel, Nanna 236, 237, 241  
242, 243, 314  
Dixon, Tom 250, 251  
252, 253, 254

### F

Fabricius, Preben 223, 285, 287  
Friis, Knud 257

### G

Gabrielsen, Bent 247

### H

Hansen, Hans 244  
Hansen, Johannes 221  
Henningsen, Poul 258, 315

### J

Jacobsen, Arne 240, 266  
Jakobsen, Hans Sandgren 312  
Jalk, Grete 268, 269  
Jensen, Søren Georg 273, 275, 295  
Jorn, Asger 294  
Juhl, Finn 230

### K

Kastholm, Jørgen 223, 285, 287  
Kjærholm, Poul 232  
233, 234, 235  
239, 282, 284  
286, 288, 301  
Klint, Vibeke 283  
Knudsen, Bent 271  
Koch, Mogens 265, 267

Koppel, Henning 293  
Kristiansen, Bo 274

### L

Larsen, Ejner 264

### M

Manz, Bodil 270  
Meyer, Grethe 224  
Mogensen, Børge 220, 289, 290  
291, 303, 304  
305, 306, 313  
Moltke Nielsen, Elmar 257

### S

Schlechter, Ivan 307, 308  
309, 310, 311  
Schmidt, Allan 296  
Siesbye, Alev Ebüzziya 245, 246  
248, 249, 277

### T

Thommesen, Anna 278  
279, 280, 281

### V

Vasegaard, Gertrud 226, 227

### W

Wegner, Hans J. 215, 222  
255, 256, 259  
260, 298, 299  
300, 302, 316  
317, 318, 319  
Weiss, Per 228  
229, 292, 297  
Wikkelsø, Illum 216  
Wohlert, Vilhelm 238  
Wolff, Jørgen 218



## KØBSVILKÅR FOR TRADITIONELLE AUKTIONER

Disse købsvilkår udgør Bruun Rasmussen Kunstauktioner A/S' ("BRK") købsvilkår for traditionelle auktioner og er gældende fra 1. februar 2017. BRK kan til enhver tid ændre købsvilkårene.

Ved bud accepterer budgiver/køber at være bundet af de til enhver tid gældende købsvilkår, som fremgår på [bruun-rasmussen.dk](http://bruun-rasmussen.dk). Købsvilkårene gælder både i forhold til erhvervsdrivende og forbrugere.

## FØR AUKTIONEN

### 1 VURDERING AF GENSTANDE

1.1 Alle udbudte genstande er vurderet af BRK. Vurderingen er et skøn over det forventede hammerslag, jf. punkt 5.3. Vurderingen er baseret på tidligere salg af samme type genstande og erfaringer hos BRK. Hammerslag kan derfor falde højere eller lavere ud end vurderingen.

### 2 BESKRIVELSE AF GENSTANDE

2.1 Udbudte genstande præsenteres med fotos og beskrivelse i kataloger og på [bruun-rasmussen.dk](http://bruun-rasmussen.dk). Beskrivelsen foretages efter bedste overbevisning af BRK og ud fra en nøje undersøgelse efter den på salgstidspunktet herskende opfattelse blandt eksperter.

2.2 De udbudte genstande er af en alder og art, der bevirker, at de ofte er behæftede med slitage, mangler, beskadigelser og reparationer. Som udgangspunkt sælges alt som brugte genstande, og derfor indeholder beskrivelsen i kataloget og på [bruun-rasmussen.dk](http://bruun-rasmussen.dk) ikke en redegørelse for ovenstående punkter eller genstandens stand.

2.3 I visse tilfælde vælger BRK at beskrive en genstands oprindelse. Det sker, hvis en tidligere ejer er offentlig kendt, og/eller hvis historien om et tidligere ejerskab belyser genstanden og dens art. Omvendt sker det også, at sådanne informationer udelades fra beskrivelsen, f.eks. for at imødekomme sælgers ønske om diskretion.

2.4 Vurderingen og beskrivelsen kan blive revideret forud for auktionen. Ændringer offentliggøres på [bruun-rasmussen.dk](http://bruun-rasmussen.dk)

### 3 EFTERSYN

3.1 Udbudte genstande udstilles op til auktionen i et showroom hos BRK. Potentielle budgivere opfordres til at se genstanden efter i detaljer og har selv ansvaret for at forvise sig om dens stand på disse eftersyn, hvor der også er mulighed for at rådføre sig hos vurderingssagkyndige.

3.2 Hvis en potentiel køber ikke har mulighed for at besigtige genstanden ved selvsyn, kan der i de fleste tilfælde udfærdiges en konditionsrapport. Beskrivelsen heri er foretaget efter BRK's bedste overbevisning, men er ikke baseret på videnskabelige undersøgelser. En konditionsrapport tjener blot som identifikation og er ment som en hjælp til budgivere, der ikke selv har mulighed for at besigtige genstanden på eftersynet.

## UNDER AUKTIONEN

### 4 BRK'S ROLLE

- 4.1 Salget af en genstand formidles af BRK på vegne af sælger. BRK afhænder altid udbudte genstande til den højst mulige pris under budgivningen.
- 4.2 Udbudte genstande kan have en med sælger aftalt mindstpris, hvorunder den ikke kan sælges. Denne pris er fortrolig.
- 4.3 De traditionelle auktioner overværes af en af Justitsministeriet beskikket auktionsleder, der sikrer, at auktionerne går retmæssigt for sig.

### 5 BUDGIVNING

- 5.1 Auktionerne afvikles i danske kroner. De tilnærmelsesvise beløb i euro/US dollar vil blive oplyst på skærme i auktionssalen og i øvrigt på opfordring.
- 5.2 Auktionarius bestemmer overbuds størrelse og i hvilket tempo, auktionen afvikles. Overbud stiger normalt med 5 % - 10 % i forhold til det foregående bud. Normalt sælges der 50-100 katalognumre i timen.
- 5.3 Hammerslag betegner både det forhold, at auktionarius slår med hammeren og derved markerer budgivningens afslutning, og den pris (budsum), den udbudte genstand sælges til. Se punkt 7 vedrørende beløb, der tillægges hammerslaget.
- 5.4 Køber er den budgiver, der opnår hammerslag. Ved hammerslaget indgås på baggrund af disse købsvilkår en bindende købs-/salgsaftale.
- 5.5 Bydes på andres vegne, hæfter budgiver som selvskyldnerkautionist for handlen.
- 5.6 Genstande købes som beset, og køber har uanset budtype ingen fortrydelsesret, heller ikke efter forbrugeraftaleloven.
- 5.7 Budgiver skal efter anvisninger fra BRK identificere sig og dokumentere sin betalingsdygtighed, f.eks. ved registrering af gyldigt betalings-/kreditkort, bankgaranti eller indbetaling af depositum.
- 5.8 BRK kan nægte at acceptere et bud, hvis en tilstrækkelig sikkerhed for betaling mangler, eller hvis budgiver tidligere har misligholdt betalingsforpligtigelser ved køb hos BRK.
- 5.9 Auktionslederen træffer i samråd med auktionarius afgørelse i alle tvivlstilfælde omkring budgivningen.

### 6 BUDTYPER

- 6.1 Der er følgende muligheder for at afgive bud:  
**PERSONLIGT FREMMØDE:**  
Registrering og udlevering af bydeskilt foregår ved indgangen til auktionssalen. Når budgiver ønsker at byde, signaleres dette til auktionarius ved at række bydeskiltet i vejret og tydeligt fremvise dets nummer.

#### **KOMMISSIONSBUD:**

Det ønskede maksimale bud kan afgives via [bruun-rasmussen.dk](http://bruun-rasmussen.dk) frem til auktionens start eller pr. e-mail, fax eller telefon, så budet er modtaget senest 24 timer forud for auktionens start. En kommissionær byder på budgivers vegne inden for rammerne af det ønskede maksimalbud og vil altid afgive lavest muligt overbud.

#### **TELEFONBUD:**

I forhold til visse genstande er der mulighed for at blive ringet op af en medarbejder fra BRK, der vil byde på budgivers vegne under auktionen. Servicen kan bestilles via [bruun-rasmussen.dk](http://bruun-rasmussen.dk) indtil tre timer før auktionens start.

#### **LIVE BIDDING:**

Det er muligt at følge auktionen live og byde med via [bruun-rasmussen.dk](http://bruun-rasmussen.dk)

#### **FORAUKTION:**

Visse traditionelle auktioner indledes med en net-auktion. De højeste bud på net-auktionen danner udgangspunktet på den efterfølgende traditionelle auktion.

## EFTER AUKTIONEN

### 7 BELØB, DER TILLÆGGES HAMMERSLAGET

7.1 I tillæg til hammerslaget, jf. punkt 5.3, skal køber for den enkelte genstand betale købersalær og, hvis betingelserne er opfyldt, de øvrige beløb, der er nærmere beskrevet nedenfor. Det samlede beløb, som køber skal betale til BRK, benævnes "købesummen".

7.1.1 Købersalær: Hammerslaget tillægges et salær til BRK. På de traditionelle auktioner udgør salæret 25,6 % af hammerslaget + moms af salæret, i alt 32 %. For frimærker og mønter udgørsalæret 20 % af hammerslaget + moms af salæret, i alt 25 %.

7.1.2 "LIVE bidding": BRK's "LIVE bidding"-software via [bruun-rasmussen.dk](http://bruun-rasmussen.dk) er gratis at benytte for budgivere.

7.1.3 Fuldmoms: Visse genstande handles efter de gældende regler om fuldmoms. Her beregnes der moms på 25 % af både hammerslag og salær. Disse genstande er i beskrivelsen i kataloget og på [bruun-rasmussen.dk](http://bruun-rasmussen.dk) mærket med symbolet "\*" eller med teksten: "Dette emne handles i fuldmoms".

7.1.4 Kunstnerafgift: Ifølge dansk lovgivning om ophavsret skal der opkræves kunstnerafgift (følgeretsvederlag) for værker af nyere danske og visse udenlandske kunstnere, som enten er nulevende eller ikke har været døde i mere end 70 år. Kunstnerafgiften opkræves på vegne af VISDA. Disse værker er i kataloget mærket med "ARR" (Artist's Resale Right) og på [bruun-rasmussen.dk](http://bruun-rasmussen.dk) med teksten "Dette emne er belagt med kunstnerafgift". Kunstnerafgiften tillægges hele hammerslaget + salær (ekskl. moms), når beløbet overstiger 300 euro, som angivet nedenfor:

Hammerslag + salær (ekskl. moms)	Betalingssats
300,01 - 50.000 euro	5%
50.000,01 - 200.000 euro	3%
200.000,01 - 350.000 euro	1%
350.000,01 - 500.000 euro	0.5%
over 500.000 euro	0.25%

Kunstnerafgiften kan ikke overstige 12.500 euro (ekskl. moms) for den enkelte genstand. Afgiften skal betales i danske kroner, og omregningskursen (EUR/DKK) fastsættes af VISDA.

7.1.5 Betalings-/kreditkortgebyr: BRK forbeholder sig ret til at opkræve de af indløsningselskaberne pålagte betalings-/kreditkortgebyrer. Satserne fremgår ved budgivning via [bruun-rasmussen.dk](http://bruun-rasmussen.dk) og ved betaling.

### 8 BETALINGSFRIST

8.1 Købesummen forfalder til betaling ved hammerslaget, og køber har herefter otte dage til at betale købesummen til BRK.

### 9 BETALINGSMÅDER

9.1 Betaling kan ske på følgende måder:

A: Med betalings-/kreditkort (Dankort, Visa, MasterCard, Maestro, Diners Club, JCB og China UnionPay) eller kontant (op til 19.999 kr.) i auktionssalen eller efterfølgende i en afdeling hos BRK. Bemærk, at vi ikke modtager 500-eurosedler.

B: Med betalings-/kreditkort (Dankort, Visa, MasterCard, Maestro, Diners Club og JCB) på [bruun-rasmussen.dk](http://bruun-rasmussen.dk) under købers personlige side.

C: Via bankoverførsel til BRK's konto i Danske Bank: 4183 4310970638 · Swift/BIC: DABADKKK · IBAN: DK4130004310970638.

## 10 MOMSFRITAGELSE, -BETALING OG -DEPONERING

10.1 Visse købere kan vælge hvilken momstype, der skal være gældende for handlen. Valget skal meddeles BRK senest to hverdage efter købet og kan ikke omgøres.

A: Momsregistrerede virksomheder i Danmark kan vælge, at handlen skal ske efter reglerne om fuldmoms, jf. punkt 7.1.3.

B: Momsregistrerede virksomheder i et andet EU-land kan fritages for dansk moms, når det kan dokumenteres, at genstanden er transporteret til den udenlandske adresse, som køber har oplyst over for BRK, og som er anført på fakturaen. I sådanne tilfælde skal der afregnes moms efter de gældende regler i det land, hvor køber er momsregistreret. Det tilrådes at søge oplysning hos de lokale myndigheder. Køber kan undlade at gøre brug af muligheden for momsfrigatelse og i stedet betale dansk brugtmoms/fuldmoms.

C: Købere med bopæl uden for EU kan fritages for dansk moms, når det kan dokumenteres, at genstanden er transporteret ud af EU. BRK udsteder så vidt muligt og mod gebyr de fornødne eksportpapirer, som skal fremvises ved toldmyndighederne. Køber kan undlade at gøre brug af muligheden for momsfrigatelse og i stedet betale dansk brugtmoms/fuldmoms.

10.2 Momsregistrerede virksomheder i et andet EU-land og købere med bopæl uden for EU skal deponere den danske moms af fakturabeløbet hos BRK, indtil eksporten er gennemført på dokumenteret lovpligtig vis. Foretages eksporten af en af BRK godkendt speditør, skal momsen ikke deponeres. Se listen over godkendte speditører på [bruun-rasmussen.dk](http://bruun-rasmussen.dk)

## 11 OVERSKRIDELSE AF BETALINGSFRIST

11.1 Overskrides en betalingsfrist, herunder fristen i punkt 8, opkræves morarenter, som beregnes efter Nationalbankens officielle udlånsrente + 8 % om året af det skyldige beløb.

11.2 Betales købesummen inkl. renter ikke senest ti dage efter, at der er fremsat påkrav herom, er BRK berettiget til at søge købesummen betalt ved modregning i depositum/ved træk på bankgaranti eller at hæve købet.

11.3 Hæves købet, er BRK berettiget til at sælge genstanden på en ny auktion og kræve omkostningerne og en eventuel difference mellem hammerslag (samt salær), der er opnået på de to auktioner, betalt af den misligholdende køber.

11.4 Alle forfaldne krav (inkl. omkostninger), som ikke betales rettidigt, kan BRK i tillæg til inkasso søge inddrevet på følgende måder:

A: For købers regning sælge genstande indleveret til auktion af eller på vegne af køber. Salget kan gennemføres uden hensyntagen til en aftalt mindstepris. Genstande indleveret til auktion kan ikke kræves udleveret, så længe forfalden gæld henstår ubetalt.

B: Inddrage købers tilgodehavende hos BRK, herunder tilgodehavende fra salg af genstande indleveret af eller på vegne af køber, uanset om et sådant tilgodehavende stammer fra auktionssalg, som ligger forud for eller efter tidspunktet for købers misligholdelse.



## 12 AFHENTNING OG UDLEVERING

- 12.1 Ejendomsretten til en købt genstand overgår til køber, når hele købesummen inkl. eventuelle renter og gebyrer er betalt, og først herefter kan udlevering af genstanden finde sted.
- 12.2 Ved udlevering af en købt genstand forbeholder BRK sig retten til at kræve tilfredsstillende dokumentation for, at den person, som ønsker genstanden udleveret, enten selv er køberen eller er bemyndiget af køberen til at få genstanden udleveret.
- 12.3 Udlevering af visse våben kræver forevisning af gyldig våbentilladelse. Sådant krav er angivet med teksten "Køb af dette emne kræver forevisning af gyldig våbentilladelse" i kataloget og på [bruun-rasmussen.dk](http://bruun-rasmussen.dk)
- 12.4 Købte genstande henligger fra hammerslaget for købers regning og risiko. Afhentning skal ske senest otte hverdage efter sidste auktionsdag.
- 12.5 Foretages afhentningen ikke rettidigt, transporteres de købte genstande til et lager for købers regning og risiko. Transporten koster 150 kr. inkl. moms pr. genstand, og opbevaringen koster 150 kr. inkl. moms pr. genstand pr. påbegyndt uge. Henligger en genstand uafhentet i så lang tid, at lagerlejen overstiger genstandens værdi, er BRK berettiget til for købers regning og risiko og uden hensyn til mindstepris at bortauktionere genstanden eller sælge den underhånden. Køber hæfter fortsat for udgifter til transport og lagerleje, der ikke dækkes ved sådant salg.
- 12.6 I henhold til gældende hvidvasklovgivning skal køber i visse tilfælde udlevere identitetsoplysninger og fremvise billed-id til BRK, før køber kan få den købte genstand i sin besiddelse

## 13 FORSENDELSE

- 13.1 Er køber forhindret i selv at afhente en genstand, tilbyder BRK for købers regning og risiko at emballere og arrangere forsendelse enten med post eller speditør. Se punkt 12.2 angående legitimation.

## 14 EKSPORTTILLADELSE

- 14.1 For at sikre at dansk kulturarv af afgørende betydning forbliver i Danmark, kan Kulturværtdiudvalget for visse genstandes vedkommende nedlægge eksportforbud. Hvis køber ønsker at eksportere en genstand ud af Danmark, hvor der er nedlagt et eksportforbud, annulleres købet, og Kulturværtdiudvalget er forpligtet til at overtage genstanden til den pris, der blev opnået på auktionen. Køber kan ikke rejse krav mod BRK som følge af, at et eksportforbud bliver nedlagt.
- 14.2 Visse genstande er omfattet af Washingtonkonventionen, også kendt som CITES, der har til formål at stoppe ulovlig handel med genstande fremstillet af udryddelsestruede vilde dyr og planter. Såfremt en genstand er omfattet af Washingtonkonventionen, CITES, liste 1, vil det fremgå af beskrivelsen på [bruun-rasmussen.dk](http://bruun-rasmussen.dk) og være markeret med symbolet "©" i kataloget. Følgende regler gør sig gældende:
  - A: Genstande omfattet af Washingtonkonventionen, CITES, liste 1, må kun handles, når der foreligger en dispensation i form af et såkaldt CITES-salgscertifikat. BRK indhenter det fornødne certifikat fra Naturstyrelsen, der tillader handel og eksport til lande inden for EU. Dog kan genstande, som er færdigforarbejdet før 1947, frit handles inden for EU uden et certifikat.
  - B: Det er alene genstande omfattet af Washingtonkonventionen, CITES, liste 1, som er særkilt markeret på [bruun-rasmussen.dk](http://bruun-rasmussen.dk) og i kataloget. Genstande omfattet af Washingtonkonventionen, CITES, liste 2, der frit kan sælges og transporteres inden for EU, er ikke særkilt markeret.
  - C: Ved eksport til lande uden for EU skal der uanset årstallet for genstandens færdigforarbejdning altid indhentes en CITES-reeksporttilladelse fra Naturstyrelsen,

når genstanden er omfattet af Washingtonkonventionen, CITES, liste 1 og 2. Denne eksporttilladelse kan normalt indhentes problemfrit, når liste 1-genstande enten er solgt med et CITES-salgscertifikat eller er færdigforarbejdet før 1947. Liste 2-genstande opnår ligeledes normalt problemfrit en reeksporttilladelse. Eventuelle omkostninger, der opkræves at de danske myndigheder i forbindelse med udstedelse af en reeksporttilladelse, vil blive pålagt købers faktura.

D: I forbindelse med eksport til lande uden for EU kan særlige regler gøre sig gældende ifm. den efterfølgende import, og køber opfordres til at indhente oplysninger fra egne myndigheder.

## 15 MANGLER VED KØBTE GENSTANDE

- 15.1 Købelovens mangelsregler kan finde anvendelse. Nedenfor er angivet et ikke udtømmende uddrag af købers mangelsbeføjelser.
- 15.2 Køber er berettiget til at annullere et køb, hvis beskrivelsen har været behæftet med væsentlige fejl, der har ført til et højere hammerslag, end en korrekt beskrivelse ville have resulteret i. I sådanne tilfælde vil den samlede købesum blive refunderet. Køber kan ikke kræve betaling af renter af købesummen eller kræve dækning af anden udgift eller tab.
- 15.3 Et køb kan ikke annulleres, og køber kan ikke kræve købesummen refunderet eller rejse noget andet krav mod BRK, hvis beskrivelsen af genstanden er i overensstemmelse med punkt 2, eller hvis en påvisning af falskneri havde krævet brug af videnskabelige metoder, der enten ikke var tilgængelige på salgstidspunktet, havde været uforholdsmæssigt omkostningskrævende at anvende eller havde ført til beskadigelse af den pågældende genstand.
- 15.4 Krav om annullering af et køb skal meddeles BRK, når køber er blevet bekendt med det forhold, der berettiger køber til at annullere købet, dog senest to år fra den seneste afhentningsdato efter punkt 12.4. Den købte genstand skal returneres til BRK i samme stand som på hammerslagstidspunktet. Overholdes disse betingelser ikke, mister køber retten til at annullere købet og kan ikke kræve købesummen refunderet. Køber er selv ansvarlig for at betale de omkostninger, der er forbundet med returnering af genstanden.

## 16 INDSIGELSES- OG ANSVARSBEGRÆNSNING

- 16.1 BRK tager forbehold for fejl, tekniske vanskeligheder samt udefrakommende misbrug eller forstyrrende påvirkning under auktionen. Budgetgiver kan ikke rejse noget krav mod BRK som følge heraf.
- 16.2 Køber er i alle tilfælde selv ansvarlig for korrekt betaling af moms og andre afgifter, gebyrer mv. i overensstemmelse med danske og udenlandske regler.
- 16.3 Medmindre andet fremgår af disse købsvilkår, kan BRK aldrig blive ansvarlig for budgetgivers/købers driftstab, avancetab, andre indirekte tab eller følgeskader.

## 17 PERSONDATAPOLITIK

- 17.1 Det er vigtigt for BRK at sikre fortrolighed og sikkerhed omkring budgetgivers/købers personlige oplysninger. Persondatapolitikken fremgår af [bruun-rasmussen.dk](http://bruun-rasmussen.dk).

## 18 KLAGE, TVISTLØSNING OG LOVVALG

- 18.1 Har budgetgiver/køber en klage, kan der altid rettes henvendelse til BRK.
- 18.2 Lykkes det ikke at finde en løsning, kan forbrugere sende en klage til Nævnenes Hus, Toldboden 2, 8800 Viborg, e-mail: [naevneneshus.dk](mailto:naevneneshus.dk). Forbrugere med bopæl i et andet EU-land end Danmark kan klage til EU-Kommissionens online klageportal via hjemmesiden: <http://ec.europa.eu/odr>.
- 18.3 Tvister skal indbringes i Danmark ved Københavns Byret, jf. dog punkt 18.2. I forbrugerforhold gælder de ufravigelige værnetingsregler.

*Bruun Rasmussen Kunstauktioner*

## CONDITIONS OF PURCHASE – LIVE AUCTIONS

**These conditions of purchase represent Bruun Rasmussen Kunstauktioner A/S' ("BRK") conditions of purchase for live auctions and are effective from 1 January 2017. BRK may modify the conditions of purchase at any time.**

**By bidding, the bidder/buyer accepts the current conditions of purchase as they appear on [bruun-rasmussen.dk](http://bruun-rasmussen.dk). The conditions of purchase are applicable to both business owners and consumers.**

## BEFORE THE AUCTION

### 1 VALUATION OF ITEMS

- 1.1 All the offered items are valued by BRK. The valuation is an estimate based on the expected hammer price, see paragraph 5.3. The estimate is based on the previous sale of similar items as well as BRK's past experience. The hammer price can therefore be higher or lower than the estimated price.

### 2 DESCRIPTION OF ITEMS

- 2.1 Items up for auction are presented with photographs and descriptions in catalogues and on [bruun-rasmussen.dk](http://bruun-rasmussen.dk). The description is worded according to the best of BRK's knowledge and based on detailed research in accordance with the prevailing views among experts at the time of sale.
- 2.2 The items up for auction are of an age and nature that often mean that they are in a worn, repaired or damaged condition. As a starting point everything is sold as used items. For this reason, the descriptions in the catalogue or at [bruun-rasmussen.dk](http://bruun-rasmussen.dk) do not include a statement regarding the above or the condition of the item.
- 2.3 In some cases, BRK may choose to describe an item's provenance. Such a description is made if a former owner is publicly known and/or if the story of previous ownership sheds further light on the item and its background. In other cases, such information is left out of the description, for instance to meet the seller's wish for privacy.
- 2.4 It is possible that the estimate and description are revised prior to the auction. Changes are published on BRK's website.

### 3 PREVIEW

- 3.1 Items up for auction are presented prior to the auction in one of BRK's showrooms. Potential bidders are encouraged to inspect the items closely and are responsible for determining the condition of the items at these previews, where they also have the opportunity to consult with the valuation experts.
- 3.2 If a potential buyer does not have the opportunity to inspect the item personally, a condition report can be drafted in most cases. The description in this report has been made according to BRK's honest conviction but is not based on scientific studies. A condition report only serves as an identification and is meant as an aid to bidders who do not have the opportunity to inspect the item at the preview.

## DURING THE AUCTION

### 4 THE ROLE OF BRK

- 4.1 The sale of an item is facilitated by BRK on behalf of the seller, and BRK always sells items up for auction at the highest price offered during the bidding round.

- 4.2 Items up for auction can have a reserve price that has been agreed upon with the seller. The price is confidential and the item cannot be sold below this price.

- 4.3 The live auctions are presided over by one of the Danish Ministry of Justice's appointed auctioneers, ensuring that the auctions proceed correctly and lawfully.

## 5 BIDDING

- 5.1 The currency used while the auctions take place is Danish kroner. The approximate amount in euro/US dollars is shown on screens in the saleroom and also on request.
- 5.2 The auctioneer determines the size of the bid increment and the pace of the auction. Bid increments usually rise by 5% - 10% compared to the previous bid. Approximately 50-100 auction lots are sold per hour.
- 5.3 The hammer price refers both to the gavel used by the auctioneer that signifies the end of a bidding round on an item and to the price (bidding amount) that the item up for auction is sold for. See paragraph 7 regarding amounts added to the hammer price.
- 5.4 The buyer is the bidder that submits the highest bid, thereby obtaining the hammer price. At the moment the hammer price is determined, a binding purchase/sale agreement is entered into based on these conditions of purchase.
- 5.5 If bids are made on behalf of others, the bidder serves as surety for the transaction.
- 5.6 Items are purchased in their present state and condition, and regardless of the type of bidding the buyer has no right to cancel his purchase, neither under the Danish Consumer Contracts Act.
- 5.7 Bidders are required, in accordance with BRK's instructions, to identify themselves and document their ability to pay, for instance by registration of a valid debit/credit card, bank guarantee or a deposit.
- 5.8 BRK may refuse to accept a bid if a sufficient guarantee of the bidder's ability to pay is not provided, or if the bidder has previously defaulted on payment obligations on purchases from BRK.
- 5.9 The overseeing auctioneer will, in consultation with the auctioneer at the podium, decide what to do in matters of dispute concerning a bidding round.

## 6 TYPES OF BIDDING

- 6.1 Bidding options:

#### IN PERSON:

Registration and obtaining the bidding paddle take place at the entrance to the saleroom. When the bidder wishes to bid, it is signalled to the auctioneer on the podium by raising the bidding paddle in the air and clearly displaying its number.

#### COMMISSION BIDS:

The intended maximum bid can be submitted via [bruun-rasmussen.dk](http://bruun-rasmussen.dk) until the start of the auction or by e-mail, fax or phone, so that the bid is received no later than 24 hours prior to the start of the auction. A commission agent bids on behalf of the bidder within the limits of the stated maximum bid. The commission agent will always bid the lowest possible amount to achieve the hammer price.

#### TELEPHONE BID:

With certain items it is possible to have a BRK employee call the bidder over the phone. The employee will then bid on behalf of the bidder during the auction. The service can be booked via [bruun-rasmussen.dk](http://bruun-rasmussen.dk) up until three hours before the auction is set to begin.

#### LIVE BIDDING:

It is possible to follow the auction live and bid on the auction lots via [bruun-rasmussen.dk](http://bruun-rasmussen.dk).

#### PRE-AUCTION:

Some live auctions are preceded by an online auction. The highest bids from the online auction then represent the starting bids at the following live auction.

## AFTER THE AUCTION

### 7 AMOUNTS ADDED TO THE HAMMER PRICE

- 7.1 In addition to the hammer price, see paragraph 5.3, the buyer pays a buyer's premium for the individual items as well as the other amounts described below if the conditions for these are applicable. The total amount that the buyer pays to BRK is called the "purchase price".
- 7.1.1 Buyer's Premium: The hammer price always includes an additional fee to BRK. At the live auctions, the fee is 25,6% of the hammer price + VAT of the fee, 32% in total. For stamps and coins, the fee is 20% of the hammer price + VAT of the fee, a total of 25%.
- 7.1.2 "LIVE Bidding": BRK's "LIVE Bidding" software is free to use for bidders on [bruun-rasmussen.dk](http://bruun-rasmussen.dk).
- 7.1.3 Full VAT: Certain items are sold at auction in accordance with the current rules regarding full VAT. In such a situation, a VAT of 25% is imposed on both the hammer price and the buyer's premium. These items are marked in the catalogue and on [bruun-rasmussen.dk](http://bruun-rasmussen.dk) with the symbol "\*", or with the text: "This item is subject to full VAT".
- 7.1.4 Artist's Resale Right: In accordance with Danish copyright law, a royalty fee covering the Artist's Resale Right has to be charged for works by newer Danish artists, and some foreign artists, who are either alive or have not been dead for more than 70 years. The royalty fee covering the Artist's Resale Right is charged on behalf of VISDA (Visual Rights Denmark). These works are marked "ARR" in the printed catalogue, and on [bruun-rasmussen.dk](http://bruun-rasmussen.dk) the description of the works includes the text: "This lot is subject to the Artist's Resale Right". The royalty fee covering the Artist's Resale Right is added to the hammer price + the buyer's premium (excluding VAT) if the amount exceeds EUR 300, as indicated below:

Hammer price + buyer's premium (ex. VAT)	Payment Rate
300,01 - 50,000 euro	5%
50,000,01 - 200,000 euro	3%
200,000,01 - 350,000 euro	1%
350,000,01 - 500,000 euro	0.5%
over 500,000 euro	0.25%

The royalty fee covering the Artist's Resale Right cannot exceed EUR 12,500 (excluding VAT) for each item. The fee must be paid in Danish kroner, and the conversion rate (EUR/DKK) is set by VISDA.

- 7.1.5 Debit/Credit Card Fee: Amounts Added to the Hammer Price: BRK reserves the right to charge the debit/credit card fees imposed by the payment services companies. The rates will appear when bidding on [bruun-rasmussen.dk](http://bruun-rasmussen.dk) and at payment.

### 8 PAYMENT DEADLINE

- 8.1 The purchase price falls due after the hammer price has been determined, and then the buyer has eight days to pay BRK the purchase price.

### 9 PAYMENT METHODS

- 9.1 The payment can be made in the following ways:
- A: With debit/credit card (Visa, MasterCard, Maestro, Diners Club, China UnionPay and JCB) or cash (up to DKK 19.999) in the saleroom or subsequently at one of

BRK's locations. Please note that we do not accept EUR 500 banknotes.

- B: With debit/credit card (Dankort, Visa, MasterCard, Diners Club and JCB) via BRK's website on the buyer's personal page.
- C: By bank transfer into BRK's account with Danske Bank: 4183 4310970638 - Swift/BIC: DABADKKK - IBAN: DK4130004310970638.

### 10 VAT EXEMPTION, PAYMENT & DEPOSIT

- 10.1 Some buyers can choose which type of VAT should apply to the transaction. The choice has to be communicated to BRK no later than two working days after the purchase and cannot be changed subsequently.
- A: Businesses in Denmark registered for VAT can decide that the transaction is to be conducted in accordance with the rules for full VAT, see paragraph 7.1.3.
- B: Businesses registered for VAT in another EU Member State can be exempted from paying Danish VAT if it can be proved that the item has been transported to the foreign address that the buyer has registered with BRK and which is written on the invoice. In such cases, the VAT should be settled according to the rules applicable in the country where the buyer is registered for VAT. It is advisable to consult with the local authorities. The buyer can decide not to be exempt from regular VAT and instead pay Danish VAT on second-hand goods/full VAT.
- C: Buyers residing outside the EU can be exempted from Danish VAT if it can be proved that the item has been transported out of the EU. To the extent possible and for a fee, BRK can issue the necessary export documents for the customs authorities. The buyer may decide not to be exempt from regular VAT and instead pay Danish VAT on second-hand goods/full VAT.
- 10.2 Companies registered for VAT in another EU Member State and buyers residing outside the EU must deposit the Danish VAT on the amount invoiced with BRK until the export process has been completed in a documented, lawful fashion. If the export is undertaken by one of BRK's authorized forwarding agents, the VAT does not have to be deposited. See the list of authorized forwarding agents on [bruun-rasmussen.dk](http://bruun-rasmussen.dk).

### 11 OVERDUE PAYMENTS

- 11.1 If payment is made after a deadline, including the deadline specified in paragraph 8, interest on overdue payments will be charged and estimated in accordance with the Danish Central Bank's official lending rate + 8% per year on the amount due.
- 11.2 If the purchase price, including interest, has still not been paid ten days after the demand for payment has been made, BRK is entitled to seek the purchase price paid by making a set-off against the deposit/by drawing on the bank guarantee or to cancel the purchase.
- 11.3 If the purchase is cancelled, BRK is entitled to sell the item at a new auction and demand the costs and any difference between the new and the earlier hammer price (including the buyer's premium) covered by the defaulting buyer.
- 11.4 In addition to debt collection, BRK may seek recovery of all due claims (including costs) not paid in a timely manner in the following ways:
- A: Making the buyer cover the costs of selling items consigned to auction by or on behalf of the buyer. The sale can be conducted without regard to an agreed reserve price. Items consigned for auction cannot be collected as long as overdue debts are unpaid.
- B: Seizing the buyer's remaining balance with BRK, including the balance from the sale of items consigned by or on behalf of the buyer, regardless of whether such receivables derive from auction sales prior to or after the date of the buyer's default on the payment.

### 12 PICK-UP & COLLECTION

- 12.1 The title to a purchased item passes to the buyer when the full purchase price, including any interest and fees, has been paid, and only then can the collection of an item take place.
- 12.2 In connection with the collection of a purchased item, BRK reserves the right to demand satisfactory documentation that the person who wants to pick up the item is either the buyer himself/herself or authorized by the buyer to receive the item on his/her behalf.
- 12.3 The collection of certain weapons requires presentation of a valid weapons certificate. Items with such requirements are listed with the text: "The purchase of this item requires the presentation of a valid weapons certificate" in the catalogue and on [bruun-rasmussen.dk](http://bruun-rasmussen.dk).
- 12.4 Purchased items are stored after the auction at the buyer's expense and risk. Pick-up must take place no later than eight working days after the last auction day.
- 12.5 If the item(s) is/are not picked up on time, the purchased items will be transported to a warehouse at the buyer's risk and expense. The transport costs are DKK 150 including VAT per item and the storage costs are DKK 150 including VAT per item for each week or part of a week. If an item is left unclaimed for an amount of time that results in the storage costs exceeding the value of the item, BRK will be entitled to, at the buyer's expense and risk and without regard to the reserve price, sell the item at an auction or privately. The buyer is still liable for the costs of transportation and storage not covered by such sale.
- 12.6 In accordance with current anti-money laundering laws, the buyer must in certain cases submit personal information and present a photo ID to BRK before the buyer can have the purchased item placed in his possession.

### 13 SHIPPING

- 13.1 If the buyer is unable to pick up the purchased item, BRK offers to pack and arrange delivery either by mail or by freight forwarder at the buyer's risk and expense. See paragraph 12.2 regarding identification.

### 14 EXPORT LICENSE

- 14.1 To ensure that Danish cultural heritage of vital importance remains in Denmark, the Danish Cultural Assets Commission can place an export ban on certain items. If the buyer wishes to export an item that is subject to an export ban in Denmark, the purchase will be cancelled and the Danish Cultural Assets Commission is obliged to acquire ownership of the item for the price obtained at auction. The buyer cannot raise any claims against BRK as a result of an export ban.
- 14.2 Certain items are included in the Washington Convention, also known as CITES. The purpose of CITES is to stop the trade of items made with endangered species and flora. If the item is included in the Washington Convention, CITES, Appendix 1, this will appear in the description of the item on [bruun-rasmussen.dk](http://bruun-rasmussen.dk) and be marked with the symbol "☉" in the catalogue. The following rules are applicable:
- A: Items that are included in the Washington Convention, CITES, Appendix 1, can only be traded when a dispensation in the form of a CITES certificate has been obtained. BRK obtains the required certificate from the Danish Nature Agency that allows trade and export to countries within the EU. Items that were produced before 1947 can, however, be freely traded within the EU without a certificate.
- B: It is only items included in the Washington Convention, CITES, Appendix 1 that are marked individually on [bruun-rasmussen.dk](http://bruun-rasmussen.dk) and in our catalogue. Items included in the Washington Convention, CITES, Appendix 2, which can be freely sold and transported within the EU, are not individually marked.
- C: Export to countries outside the EU must, regardless of the year of the item's production, always procure a CITES re-export permit from the Danish Nature Agency if the item is included in the Washington Convention, Appendix 1 and 2. This export permit can usually be

obtained without problems, if the item is either sold with a CITES certificate or was made prior to 1947. Appendix 2 items usually also receive a re-export permit without problems. Any fees charged by the Danish authorities in connection with the issuance of a re-export permit will be added to the buyer's invoice.

D: In connection with export to other countries outside the EU, special rules may apply concerning the subsequent import, and the buyer is encouraged to consult the relevant local authorities about this issue.

### 15 DEFECTS IN THE PURCHASED ITEMS

- 15.1 The lack of conformity rules of the Danish Sale of Goods Act may apply. Below is a non-exhaustive excerpt of the buyer's remedies in regard to lack of conformity.
- 15.2 The buyer is entitled to cancel a purchase if the description contained significant errors that have led to a higher hammer price than a correct description would have resulted in. In such cases, the total purchase price will be refunded. The buyer cannot demand payment of interest on the purchase price or demand payment of any other expenses or losses.
- 15.3 A purchase cannot be cancelled and the buyer cannot demand a refund of the purchase price or raise any other claims against BRK if the description of the item is in compliance with paragraph 15.2. The same applies if evidence of forgery has required the use of scientific methods that were either not available at the time of sale, were excessively costly to use or led to the damage of the item in question.
- 15.4 Claims for a cancellation of a purchase must be notified to BRK when the buyer has discovered the fact that entitles the buyer to cancel the purchase. This notice, however, has to be given no later than two years after the final pick-up date according to paragraph 12.4. The item purchased must be returned to BRK in the same condition as it was on the day it was sold at auction. If these conditions are not met, the buyer loses the right to cancel the purchase and cannot claim a refund of the purchase price. The buyer is responsible for paying the costs associated with the return of the item.

### 16 OBJECTIONS & LIMITATIONS OF LIABILITY

- 16.1 BRK is aware that errors, technical difficulties and external abuse or disruptive influences may occur during the auction. Bidders cannot raise any claims against BRK as a result of such events.
- 16.2 The buyer is always responsible for the correct payment of VAT and other costs, fees etc. in accordance with Danish and foreign regulations.
- 16.3 Unless otherwise stated in these conditions of purchase, BRK may never be held liable for bidders'/buyers' operating loss, loss of profits, other indirect losses or consequential loss.

### 17 PRIVACY POLICY

- 17.1 It is important to BRK to ensure confidentiality and security regarding the bidder's/buyer's personal information. The privacy policy can be found on [bruun-rasmussen.dk](http://bruun-rasmussen.dk).

### 18 COMPLAINTS, DISPUTE RESOLUTION AND APPLICABLE LAW

- 18.1 BRK can always be contacted if the bidder/buyer has a complaint.
- 18.2 If the dispute cannot be resolved, the consumer can submit a complaint to the Complaint Resolution Centre, Nævnenes Hus, Toldboden 2, 8800 Viborg, Denmark, email: [naevneshus.dk](mailto:naevneshus.dk). Consumers residing in another EU country than Denmark can submit their complaint to the European Commission's Online Dispute Resolution platform via the website: <http://ec.europa.eu/odr>.
- 18.3 In Denmark, disputes must be brought before the City Court of Copenhagen, but see paragraphs 18.2. The mandatory rules on jurisdiction apply to consumer interests.

*Bruun Rasmussen Kunstauktioner*

*The above is an English translation of the Danish version of the Conditions of Purchase. In case of a dispute, only the Danish version of the present Conditions of Purchase of Bruun Rasmussen is valid.*

## ADDRESSES

### BRUUN RASMUSSEN AUCTIONEERS

#### COPENHAGEN – BREDGADE

BREDGADE 33, DK-1260 COPENHAGEN K  
+45 8818 1111 / info@bruun-rasmussen.dk

#### COPENHAGEN – SUNDKROGSGADE

SUNDKROGSGADE 30, DK-2150 NORDHAVN  
+45 8818 1111 / info@bruun-rasmussen.dk

#### GLOSTRUP

PAUL BERGSØES VEJ 20B, DK-2600 GLOSTRUP  
+45 8818 1111 / info@bruun-rasmussen.dk

#### AARHUS

SØREN FRICHS VEJ 34D, DK-8230 ÅBYHØJ  
+45 8818 1100 / aarhus@bruun-rasmussen.dk

#### FYN

NICK MESSMANN  
+45 8818 1232 / nic@bruun-rasmussen.dk

#### REPRESENTATIVES

##### FRANCE & BELGIUM

DITTE HERBORG KROGH · PARIS  
+33 6 6185 4564 / dhk@bruun-rasmussen.dk

##### SOUTHERN FRANCE & LUXEMBOURG

PETER KOCH  
+45 4045 3403 / p.koch@bruun-rasmussen.dk

##### GERMANY

NICK MESSMANN  
+45 8818 1232 / nic@bruun-rasmussen.dk

##### USA

BENEDICTE HALLOWELL  
+1 617 566 7333 / b.hallowell@bruun-rasmussen.dk

## CONTACT DIRECTLY

### KONTAKT DIREKTE

#### HOVEDNUMMER / MAIN NUMBER

Bruun Rasmussen Auctioneers +45 8818 1111

#### ADMINISTRATION

Jakob Dupont, CEO +45 8818 1081  
dupont@bruun-rasmussen.dk

#### KUNDESERVICE / CUSTOMER SERVICE

kundeservice@bruun-rasmussen.dk +45 8818 1010  
customerservice@bruun-rasmussen.dk +45 8818 1010

#### KOMMISSIONER / COMMISSIONS

Lise Winther Wobido +45 8818 1013  
Anja Bering Hansen +45 8818 1028  
bids@bruun-rasmussen.dk

#### BESTILLING AF KATALOGER / CATALOGUE REQUESTS

Kundeservice / Customer service +45 8818 1111

#### AUKTIONS RÅDGIVNING / AUCTION GUIDANCE

Franziska Kampmann +45 8818 1026  
fka@bruun-rasmussen.dk

#### SHIPPING

shipping@bruun-rasmussen.dk +45 8818 1055

#### VURDERING OG INFORMATION / VALUATION AND INFORMATION

##### INDBOVURDERINGER / VALUATION AT YOUR HOME

Liselotte Toxværd Møller +45 8818 1234  
ltm@bruun-rasmussen.dk

Hans Ruben +45 8818 1231  
hru@bruun-rasmussen.dk

Ralph Lexner +45 8818 1161  
rl@bruun-rasmussen.dk

Kasper Nielsen +45 8818 1121  
kn@bruun-rasmussen.dk

##### ARMBÅNDSURE / WRISTWATCHES

Vilhelm Islandi Bramsen +45 8818 1239  
vib@bruun-rasmussen.dk

##### BØGER / BOOKS

Emma Marie Poulsen +45 8818 1217  
emp@bruun-rasmussen.dk

##### FRIMÆRKER / STAMPS

Christian Grundtvig +45 8818 1214  
cg@bruun-rasmussen.dk

##### MØNTER / COINS

Michael Märcher +45 8818 1202  
mm@bruun-rasmussen.dk

#### MODERNE DESIGN / MODERN DESIGN

Peter Kjelgaard Jensen +45 8818 1191  
pkj@bruun-rasmussen.dk

#### MODERNE KUNST / MODERN ART

Niels Raben +45 8818 1181  
nr@bruun-rasmussen.dk

Niels Boe-Hauggaard +45 8818 1182  
nbh@bruun-rasmussen.dk

#### MODERNE SØLV / MODERN SILVER

Amalie Hansen +45 8818 1194  
amh@bruun-rasmussen.dk

#### PORCELÆN, GLAS OG ASIATISK KUNST / CERAMICS, GLASS AND ASIAN ART

Ralph Lexner +45 8818 1161  
rl@bruun-rasmussen.dk

Line Hjorth Langkjær +45 8818 1166  
lla@bruun-rasmussen.dk

#### RUSSISK KUNST / RUSSIAN ART

Martin Hans Borg +45 8818 1128  
mhb@bruun-rasmussen.dk

#### SMYKKER / JEWELLERY

Katrin Mikkelsen Sørensen +45 8818 1174  
kms@bruun-rasmussen.dk

#### TÆPPER / CARPETS

Henrik Schleppegrell +45 8818 1145  
hsc@bruun-rasmussen.dk

#### VIN / WINE

Thomas Rosendahl Andersen +45 8818 1206  
tra@bruun-rasmussen.dk

#### VÅBEN / WEAPONS

Ralph Lexner +45 8818 1161  
rl@bruun-rasmussen.dk

#### ÆLDRE KUNST / FINE ART

Julie Arendse Voss +45 8818 1123  
jav@bruun-rasmussen.dk

Birte Stokholm +45 8818 1122  
bst@bruun-rasmussen.dk

#### ÆLDRE MØBLER / FURNITURE

Henrik Schleppegrell +45 8818 1145  
hsc@bruun-rasmussen.dk

Anders Fredsted +45 8818 1142  
afr@bruun-rasmussen.dk

#### ÆLDRE SØLV / SILVER

Heidi Schophuus Jensen +45 8818 1163  
hsj@bruun-rasmussen.dk

## COMMISSION BIDS

### KOMMISSIONSBUD

It is possible to leave commission bids if you can not be present at the auction yourself. This service is free of charge.

When leaving a commission bid, you are instructing our customer service to bid up to a specified amount on your behalf.

The situation can occur that another buyer has already bid the same as you were prepared to. Are you then willing to bid further? If not the lot will be sold to another buyer.

If you do not wish to exceed your bid then write "Max", for maximum, next to the amount. You can also allow us to raise your bid by approx. 15% or approx. 25%.

The hammer price may be higher or lower than the estimated price, so it is possible to buy below the estimate. Bruun Rasmussen will always buy at the lowest price possible, as if you yourself had been present at the auction.

All commission bids are strictly confidential.

Commission bids must be submitted no later than **24 hours** prior to the start of the auction.

#### HOW TO MAKE A COMMISSION BID:

Complete the commission form with all pertinent information.

Indicate the lot number.

Indicate the amount you are prepared to bid.

Should this amount be the absolute maximum, please write "Max" in the appropriate column.

You can also allow us to bid by up to approx. 15% or approx. 25% more by indicating so.

Sign the commission form and make sure that Bruun Rasmussen receives it **24 hours** prior to the start of the auction.

If the information should be insufficient, Bruun Rasmussen can abstain from bidding. Bruun Rasmussen can not be held responsible for error in bidding or failure to execute bids.

#### INTERNET:

Commission bids can be submitted via website [bruun-rasmussen.dk](http://bruun-rasmussen.dk) directly from the page with the item you want to submit a bid for.

Deadline for submissions of bids via the website is **3 hours** prior to the start of the auction.

Submitted bids are shown under "Your bids" when you are logged in. Please contact technical support on +45 8818 1114 for questions about the registration and submission of bids on the website.

For additional information, please consult "Conditions of Purchase" §1.

#### TELEPHONE BIDDING:

Should you wish to bid at auction by telephone, please inform Bruun Rasmussen of your name and telephone number, as well as which catalogue numbers you are interested in, no later than **3 hours** prior to the start of the auction. You will then be contacted shortly before the relevant lot comes under the hammer, thereby allowing you to participate without being in the auction room yourself.

For additional information, please consult "Conditions of Purchase" §1.

Det er muligt at afgive kommissionsbud, hvis De ikke selv kan være til stede på auktionens dag. Denne service er gratis.

Når De afgiver en kommission, beder De vores kundeservice på Deres vegne byde op til et af Dem bestemt beløb i hammerslag.

Der kan opstå den situation, at en anden køber allerede har budt det beløb, som De ønsker at afgive. Er De da villig til at gå et bud højere eller er De indforstået med at nummeret sælges til anden side?

Ønsker De ikke at byde højere så skriv "Max" ud for beløbet. Er De i tvivl om hvor højt De vil byde, kan De hæve budet med op til ca. 15% eller ca. 25%.

Salgsprisen kan blive højere eller lavere end vurderingen, så der er også mulighed for at købe til under den angivne vurdering. Vor kundeservice køber altid så billigt som muligt til Dem, som havde De selv været tilstede på auktionen.

Alle kommissioner behandles strengt fortroligt.

Kommissionsbud skal være Bruun Rasmussen i hænde senest **24 timer** før auktionens start.

#### SÅDAN BYDER DE:

Udfyld blanketten kommissionsbud med alle oplysninger.

Angiv katalognummer.

Angiv beløbet De ønsker at byde.

Er dette Deres absolutte maximum bedes De anføre "Max" i kolonnen.

De kan også forhøje Deres bud med henholdsvis ca. 15% eller ca. 25%, ved at indikere dette i kolonnen.

De bedes underskrive kommissionsblanketten og sikre Dem, at Bruun Rasmussen modtager den senest **24 timer** før auktionens start.

Hvis Deres oplysninger ikke er tilstrækkelige, kan Bruun Rasmussen undlade at byde for Dem, ligesom Bruun Rasmussen ikke kan gøres ansvarlig for fejl ved budgivningen.

#### INTERNET:

Kommissionsbud kan afgives på hjemmesiden [bruun-rasmussen.dk](http://bruun-rasmussen.dk) direkte fra siden med den effekt, De ønsker at byde på.

Seneste afgivelse af bud via hjemmesiden er **3 timer** før auktionens start.

Afgivne bud kan ses på hjemmesiden under "Deres bud", når de er logget ind. Kontakt teknisk support på 8818 1114 for spørgsmål om registrering og budgivning via internettet.

For yderligere information, se "Købskonditioner", §1.

#### TELEFONBUD:

Såfremt De ønsker at byde pr. telefon, bedes De oplyse Bruun Rasmussen Deres navn og telefonnummer samt hvilke katalognumre, De ønsker at byde på, senest **3 timer** før auktionens start. De vil så blive ringet op kort før, den aktuelle vare kommer under hammeren, og De kan på denne måde deltage i auktionen uden selv at være til stede.

For yderligere information, se "Købskonditioner" på [bruun-rasmussen.dk](http://bruun-rasmussen.dk) under "Guide".

## COMMISSION BIDS

### KOMMISSIONSBUD

BREDGADE

Skal være Bruun Rasmussen i hænde senest **24 timer** før auktionens start.

*Must be submitted no later than 24 hours prior to the start of the auction.*

AUKTION NR AUKTION NO: **914**

Navn *Name*: \* .....

Adresse *Address*: \* .....

Postnr./by *City*: \* .....

Land *Country*: \* ..... Fax: .....

Tel: \* .....

e-mail: ..... CVR-nr. *VAT No.*: .....

Bank: ..... Konto nr. *Acct. No.*: .....

Adresse *Address*: .....

Postnr./By *City*: ..... Land *Country*: .....

Tel: ..... Kontaktperson *Contact*: .....

Obligatoriske felter er mærket med en stjerne \* *Mandatory fields are marked with an asterisk \**

Undertegnede giver hermed fuldmagt til Bruun Rasmussen Kunstauktioner A/S om på mine vegne at købe nedennævnte katalognumre så fordelagtigt som muligt, inden for det af mig anførte beløb, i hammerslag. *I hereby request that Bruun Rasmussen bid on my behalf on the following lots up at the prices indicated below.*

Undertegnede har udfyldt ovennævnte med de ønskede oplysninger, samt har accepteret købskonditionerne. *The undersigned has supplied the required information and agrees to be bound by the conditions of purchase.*

Signatur: \* ..... B.R. kunde-nr. *Client No.*: .....

Jeg ønsker at modtage salgsresultater på de emner jeg har budt på via email  dagligt  efter auktion  
 *I wish to receive sales results on the items I have been bidding on via e-mail*  *every day*  *after the auction*

på e-mail adressen *on this e-mail address*: .....

Katalog nr. Lot. No.	Beskrivelse Description	Bud kr. Bid DKK	Max	+15%	+25%

#### BRUUN RASMUSSEN KUNSTAUKTIONER A/S

Bredgade 33 · DK-1260 København K · Tel +45 8818 1111 · Fax +45 8818 1112 · [bids@bruun-rasmussen.dk](mailto:bids@bruun-rasmussen.dk) · [bruun-rasmussen.dk](http://bruun-rasmussen.dk)

Fortsættes næste side *Please turn over*





 DESIGN

